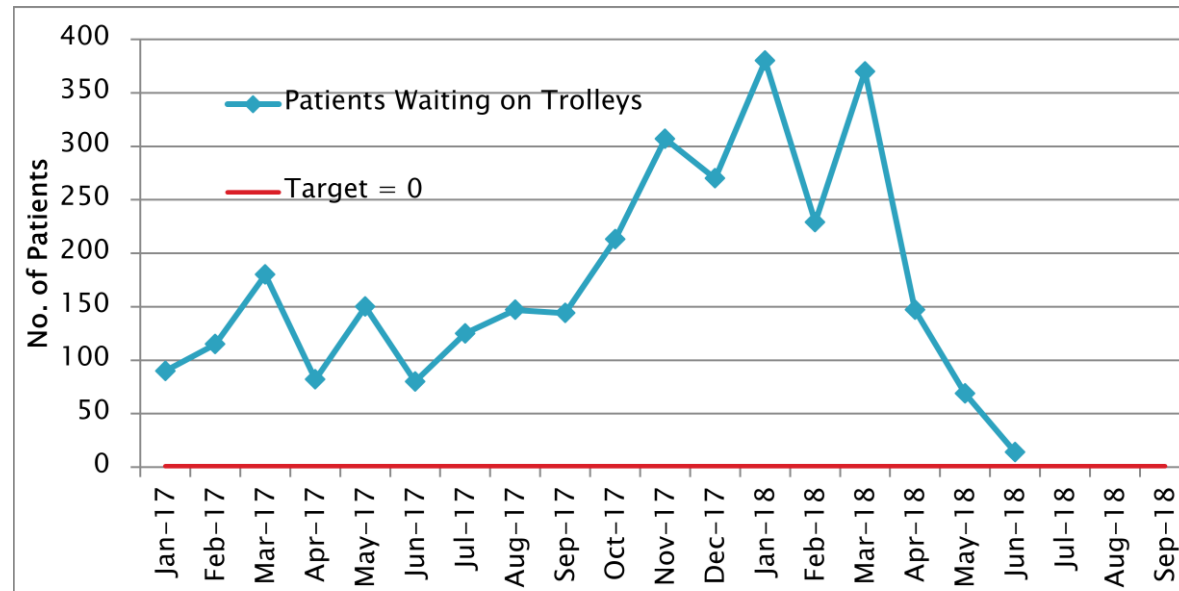
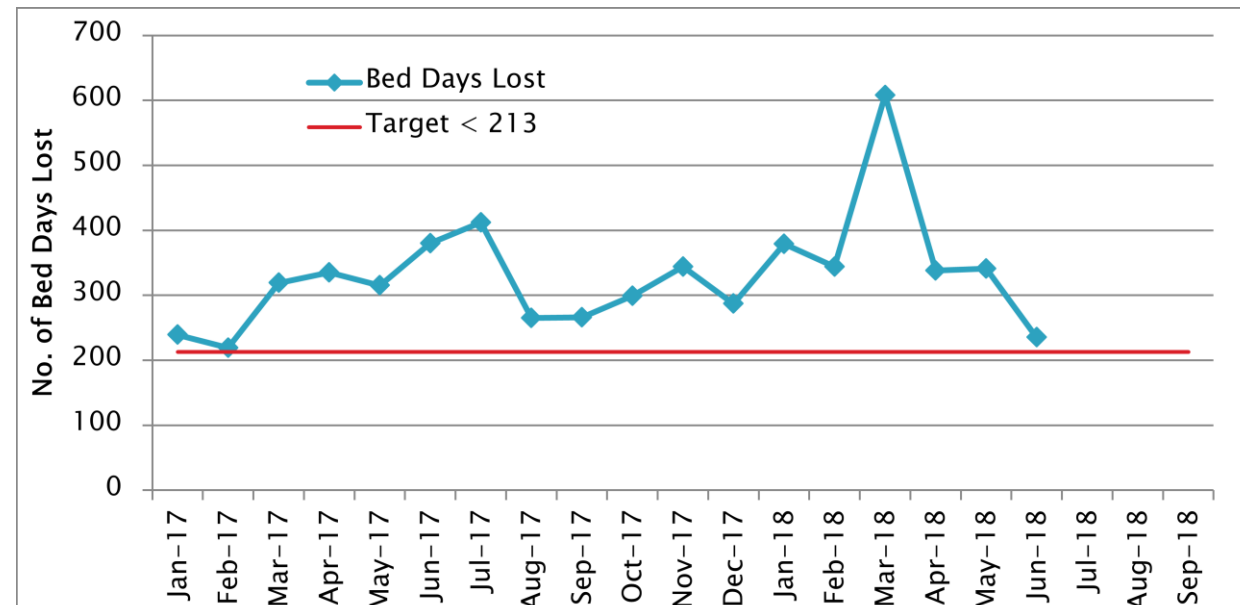




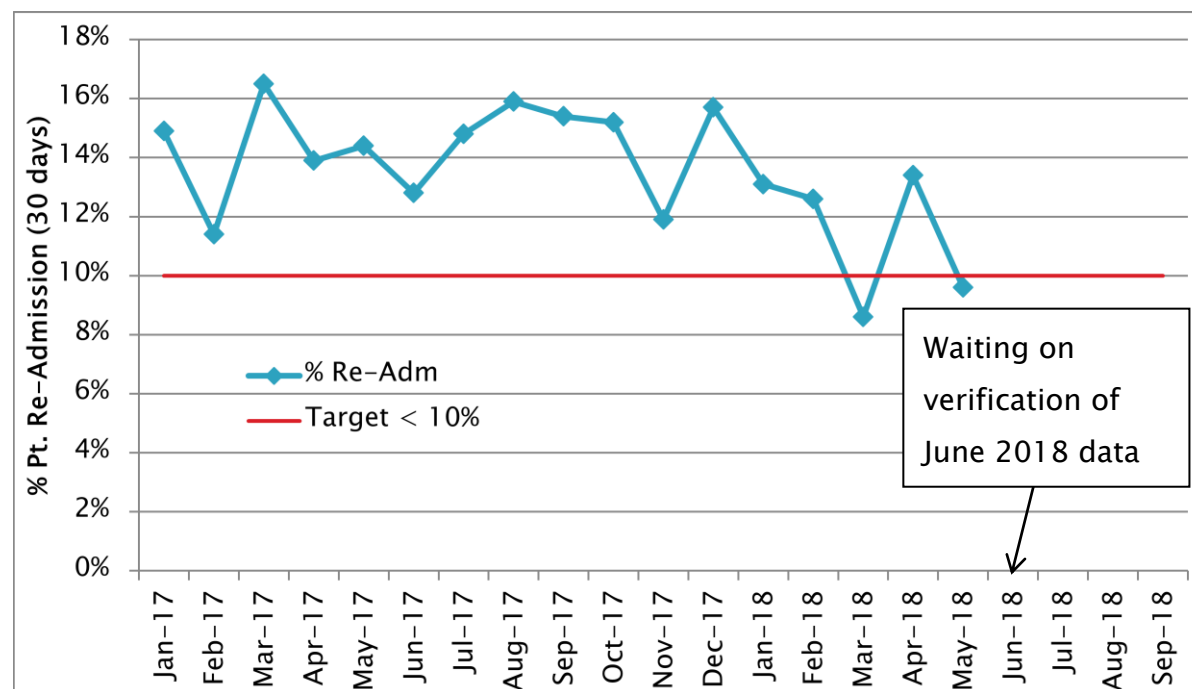
Patients Waiting on Trolleys for an Inpatient Bed



Patients who are Medically Fit to be discharged and cared for at Home with Support or in a Nursing Home or District Hospital but still in MUH



Medical Re- Admissions Rates



What does this mean?

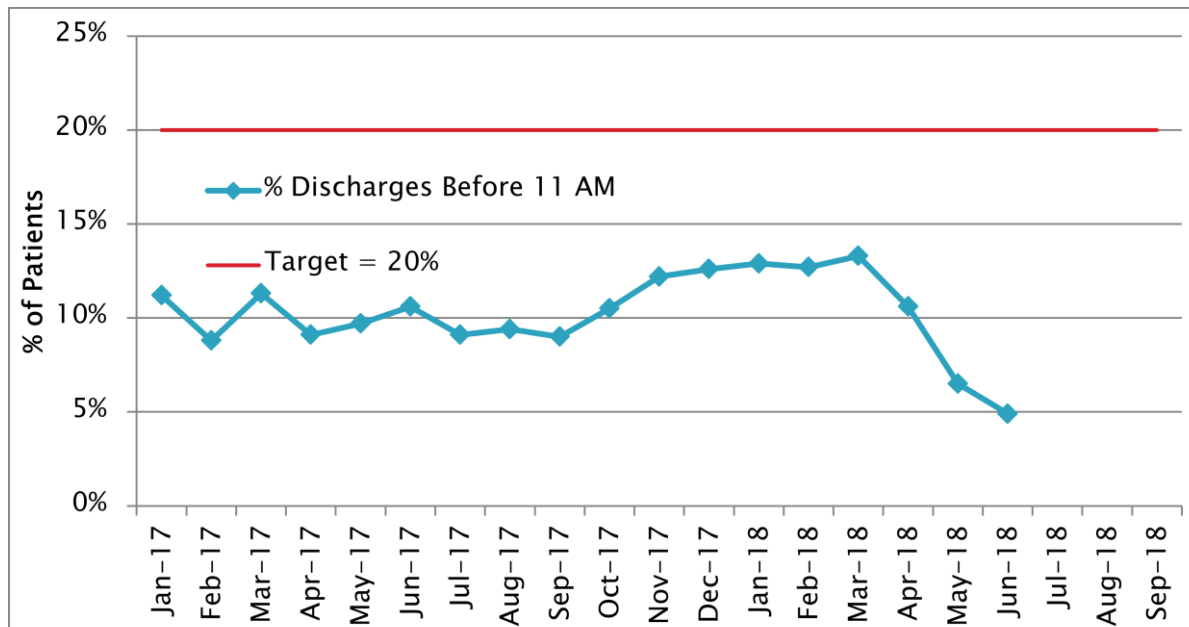
The aim of MUH is to get the right patient into the right bed for the right care. The numbers of patients waiting on a trolley for an inpatient bed is affected by the number of patients who are ready to be discharged to home with support or to a non-acute bed e.g. a nursing home or district hospital.

If a patient represents to MUH in an unplanned unexpected fashion within 30 days a review of the reasons will take place. MUH's aim is to prevent all avoidable re-admissions.

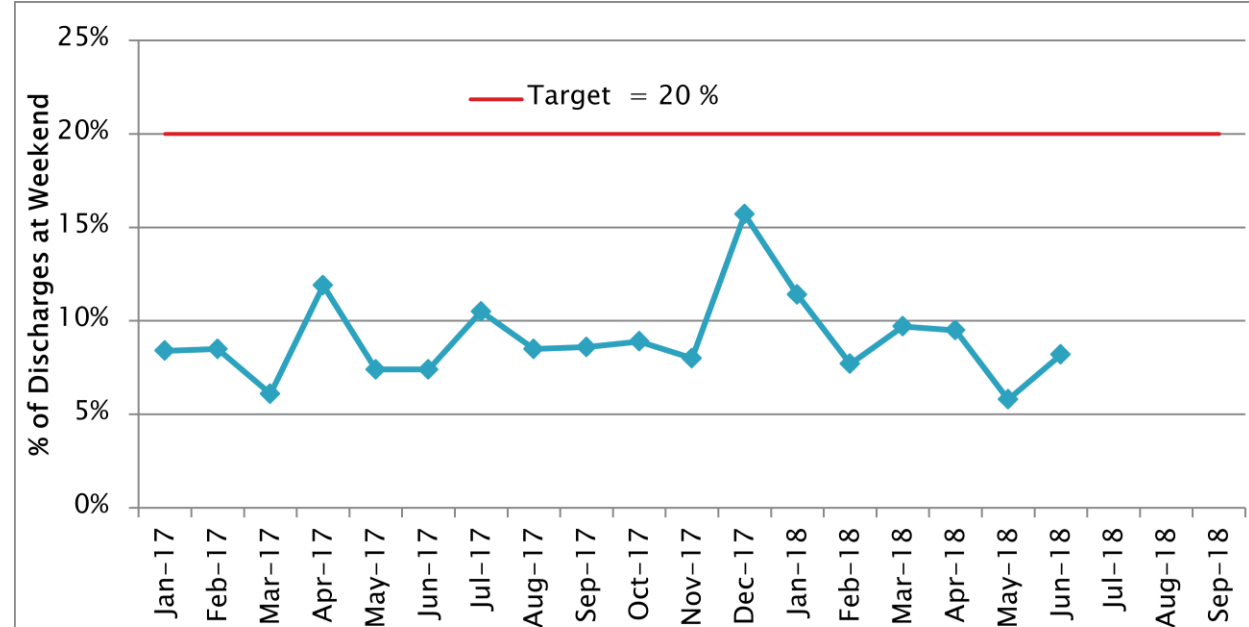
Please Note: Bed Days Lost as a result of delayed discharges was adversely affected as a result of the knock-on effects of Storm Emma in March.



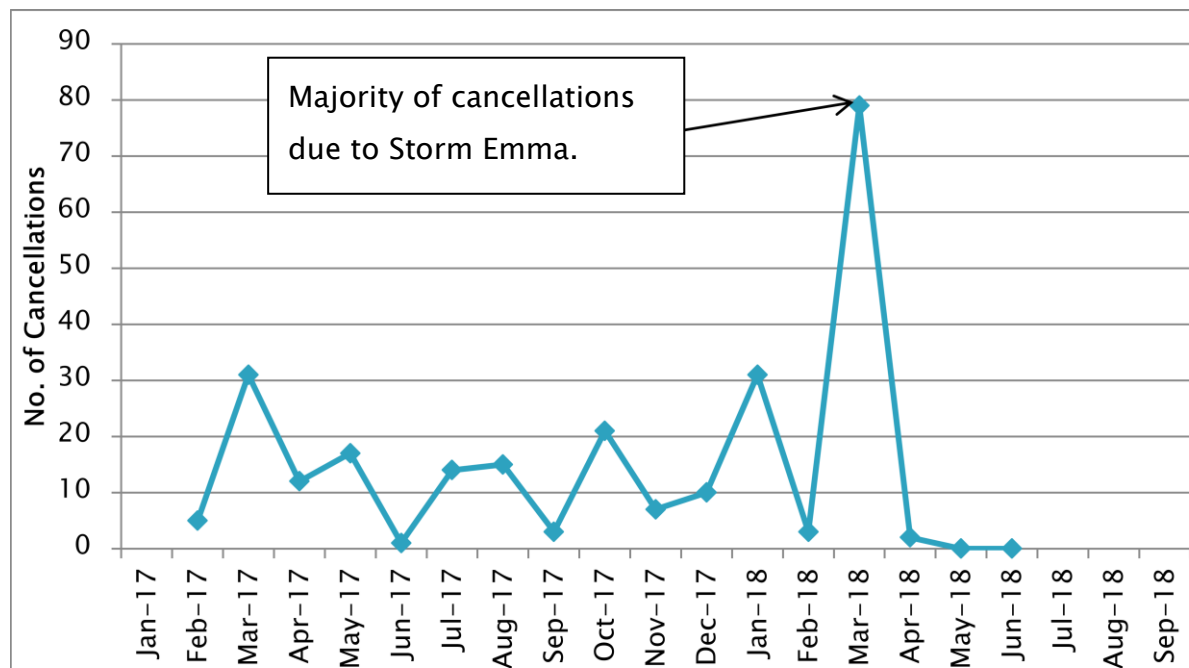
Patients Discharged and Ready Before 11 AM



Patients Discharged on Saturday and Sunday



Number of Patients Cancelled by Hospital due to bed availability



What does this mean?

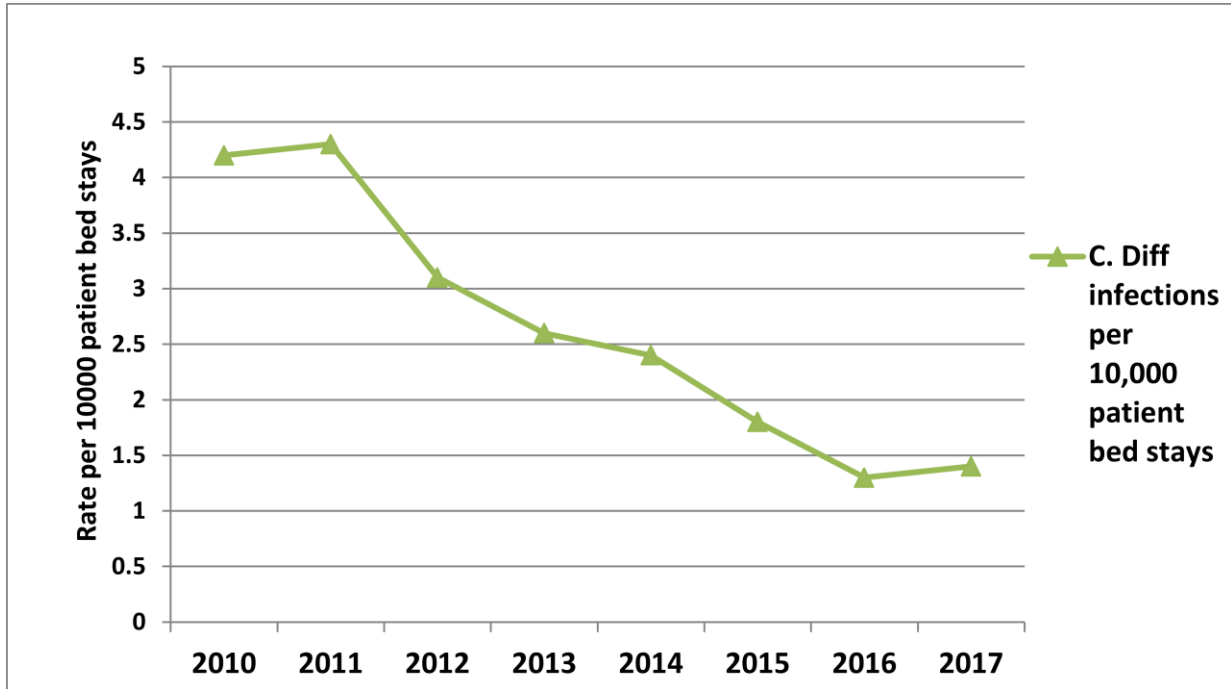
Early Discharges before 11 am means we can allocate beds to those waiting overnight.

Weekend Discharges help with Patient Flow on Monday and prevent Electives being cancelled.

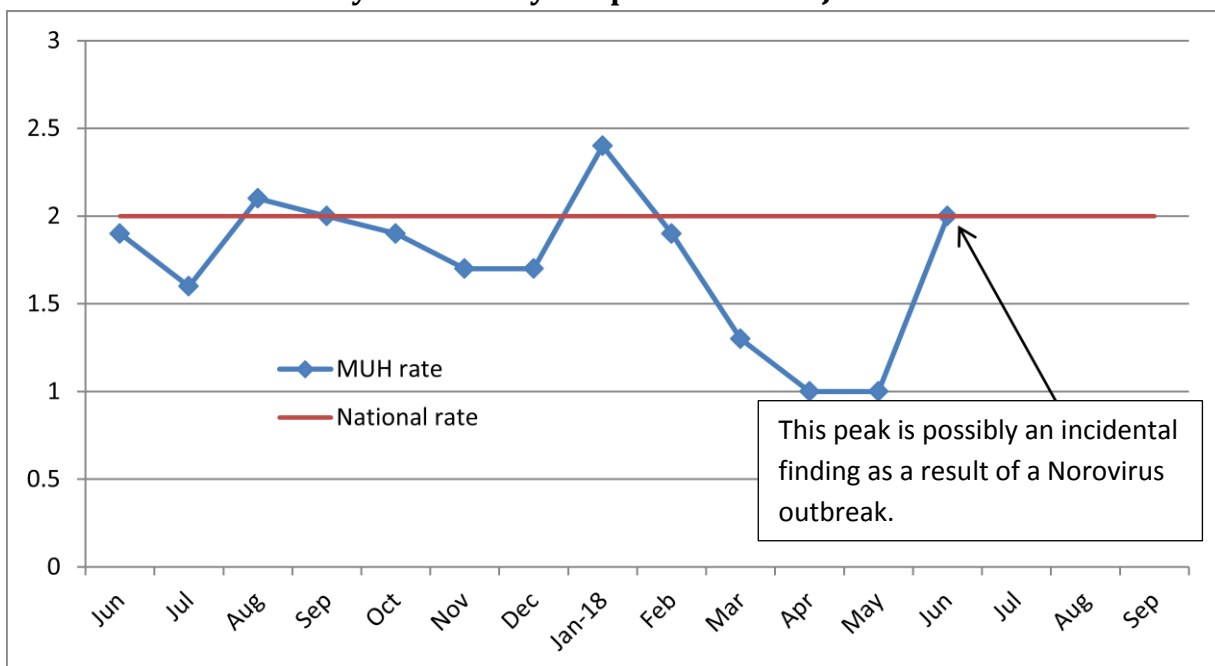
Please note: The majority of hospital cancellations in March were due to Storm Emma.

Reducing Clostridium Difficile infections in Mayo University Hospital Updated July 2018

Annual C. difficile infections (CDIs) in Mayo University Hospital 2010 - 2017

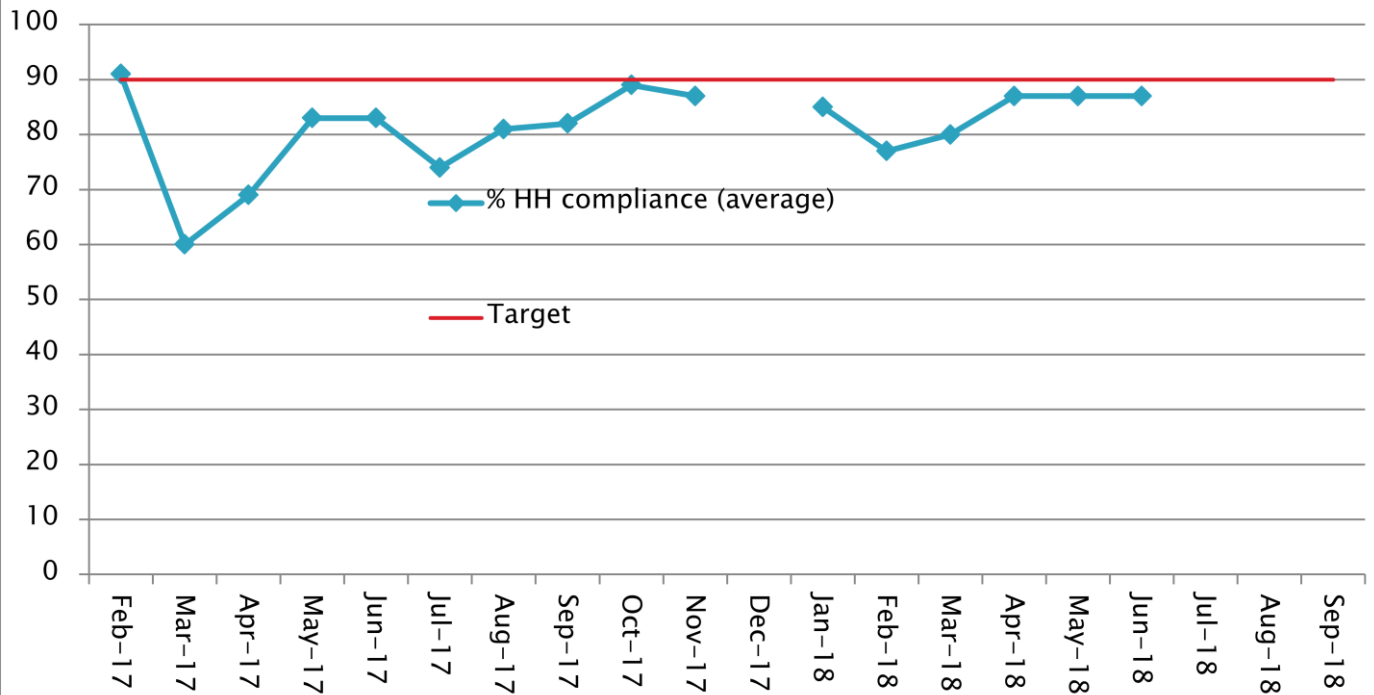


C. difficile infections (CDIs) in Mayo University Hospital Feb '17 - Jun '18



MUH Commitment to Quality Care through Hand Hygiene and Environmental Audits **Updated July 2018**

Average % Compliance with Hand Hygiene across all Staff Grades



What does this mean?

- **Appropriate Antibiotic Prescribing -**
 - *Pharmacists regularly audit use of antibiotics to ensure if the antibiotic is necessary, the correct type of antibiotic by the correct route (IV or Oral) for the correct duration.*
 - *Benefits include reduction of C.diff rates and line infections, reduced length of stay and Cost savings*
- **Effective prevention and control of Healthcare-associated Infections HCAI requires a multi-targeted approach .**
Some ways of reducing Healthcare Infections include:
- **Effective hand hygiene - Education and audit of all staff**
 - *100% of Doctors including ALL Consultants have undertaken Hand Hygiene training in the past 2 years as required*
 - *Aim to have compliance of at least 90 % on Audit*
- **Clean environment -**
 - *Audit of all clinical areas identifies shortcomings and actions are taken to rectify deficiencies*
 - *Aim to have compliance of at least 85%*

EVERYBODY HAS A ROLE TO PLAY IN MEDICATION SAFETY

MOST OF OUR PATIENTS REQUIRE MEDICATION SO.....

BEFORE YOU PRESCRIBE, DISPENSE OR GIVE IT... KNOW CHECK ASK

IMPROVING DISCHARGE PRESCRIPTION COMMUNICATION:

DOCTORS:
Ensure the medicine changes & reasons for change are documented in the relevant section to facilitate communication to GPs, Patient/Carers and community pharmacy

NURSES:
Ensure the time of administration of each drug is documented on the day of discharge to ensure patient's/carers know when the next dose is due.

PROVIDE PATIENTS WITH A 'KNOWING MY MEDICINES' LEAFLET PRIOR TO DISCHARGE FROM HOSPITAL

Encourage patients to:

1. Fill out their leaflet accurately
2. Keep the list up to date when any medication changes are made
3. Bring it into hospital with them for outpatient appointments and admissions
4. Bring it to their GP/community pharmacy for reference

Mayo University Hospital is committed to the World Health Organisation (WHO) Medication without Harm Campaign.

We want our patients and staff to improve communication about medicines.

<http://www.socla.ie/hospital/muh>

We want our patients and staff to improve communication about medications .

This month was all about raising awareness and our message was

HEALTHCARE STAFF - Before you prescribe, dispense or give a medicine;

- you should ensure you **KNOW** the medicine,
- **CHECK** that you have the right patient, medicine, route, dose and time,
- should **ASK** the patient if they understand.

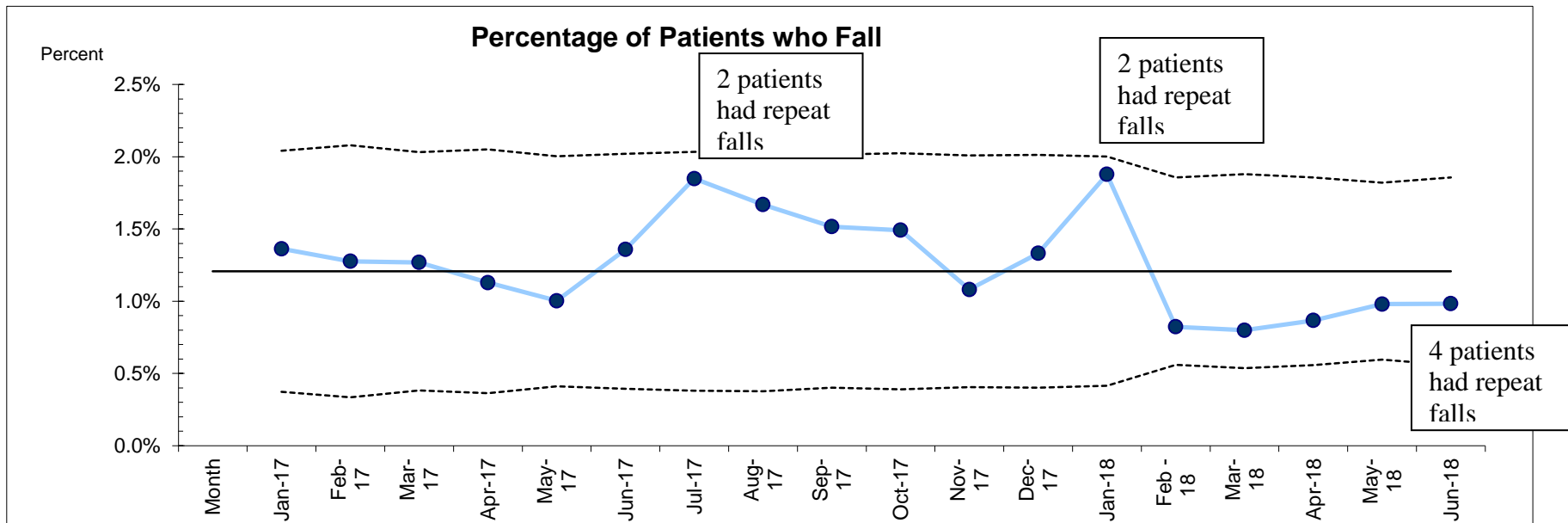
Equally **PATIENTS** before they take their medicine should ;

- ensure that they **KNOW** their medicine,
- **CHECK** the dose and time,
- **ASK** the health care professional if they don't understand.

Pull up banners and posters for patients and staff are now displayed throughout the hospital to spread this important message!

Quality Improvement in Falls Prevention and The Management of Fallen Patients- updated July 2018

This chart shows the percentage of falls in relation to patients discharged from MUH. We have a high rate of over 65 year old patients admitted to MUH and this correlates with the increasing age profile of the population of patients we care for.



Posters on display in clinical areas please read and talk to staff about falls prevention



What does this mean?

What is a fall

A fall is defined as an event which results in a person coming to rest inadvertently on the ground or floor or other lower level.

There were two patients in January 2018 and four patients in June 2018 that were predisposed to falls due to pre-existing medical complaints. A comprehensive care plan was put in place for these patients and there was no serious physical harm.

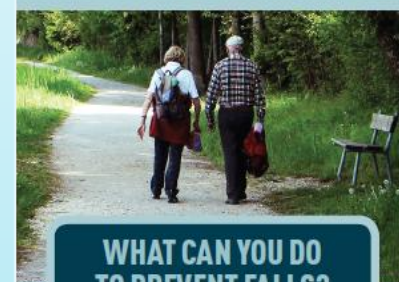
Harm caused

There have been 4 Serious Reportable Events from January – June 2018, all were fractures. Immediate care was given to these patients. A falls review was undertaken to identify any contributory factors, and actions were taken.

Actions we have implemented

Policy on identification, assessment, prevention and management of patient falls, new falls assessment, care plan and bed rail risk assessment; Purchased ultra-low beds, one in each of the main clinical areas and falls prevention alarms; The Red Star initiative to identify patients at risk of falling; Information leaflet for health care worker; The actions to take when a patient falls are included in MUH patient safety book; Education on correct use of seating to prevent falls; Multidisciplinary MUH Falls Education DVD.

FALLS - HOW TO PROTECT YOURSELF



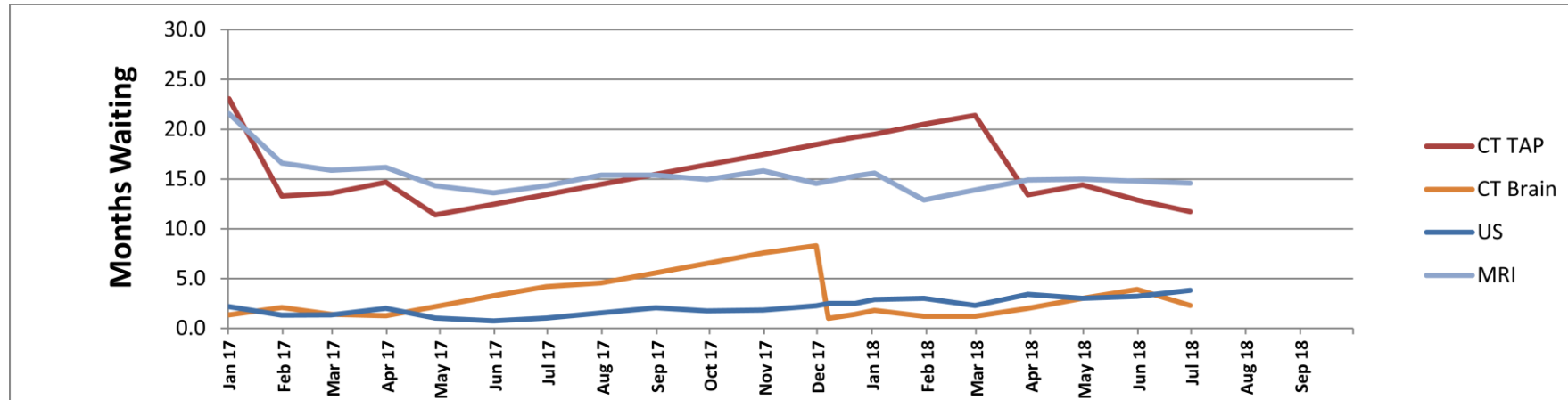
WHAT CAN YOU DO TO PREVENT FALLS?

There is no single reason why people fall. A fall usually occurs when several events happen at the same time. The causes of falls are often called risk factors. If you have had a fall talk to your doctor, nurse or therapist about what caused the fall and what you can do to address your risk factors.

Leaflet available on wards. Please talk to staff about falls prevention



Radiology Wait Times



What does this mean?

Targeted CT & MRI lists on the longest waiting patients have realised some significant reductions in longest wait times in recent months.

It is planned to continue these targeted lists throughout 2018 in order to further reduce the longest wait times.