



A Year in Review

2022



Contents

CEO Overview	2-3
About Saolta University Health Care Group	4
One year in figures	5
Our Staff	6
Vaccinations	8
Recruitment	11
Enhanced Community Care Programme	12
Saolta Programme Management Office (PMO).....	13
Galway University Hospitals	14-15
Mayo University Hospital	16-17
Portiuncula University Hospital	18-19
Roscommon University Hospital	20-21
Sligo University Hospital	22-23
Letterkenny University Hospital	24-25
Monthly Highlights	26-45



Photo: Lauren Conway, Student Midwife, University Hospital Galway.

Front Cover Photo: Mary Luraigi, Staff Midwife and Jephy Thomas, Staff Nurse, University Hospital Galway.



Tony Canavan,
CEO, Saolta University Health Care Group.

As we reflect on 2022, we see that, despite the ongoing challenges of the COVID-19 pandemic, our hospitals continued to provide quality healthcare to those in need. A significant scale of work was carried out across all our hospitals to reduce patient waiting lists. 2022 also saw significant infrastructure expansion across the Hospital Group.

We made considerable progress in improving access to our hospitals across 2022 with reductions in the number of patients waiting across outpatients, inpatients, day cases and GI scopes.

After two years of managing and overseeing the regional Covid Vaccination Programme, responsibility transferred from Saolta to HSE Community Healthcare Organisations in the West and Northwest.

At the point of handover, Saolta had administered 750,000 vaccinations, of which 703,000 had been administered in mass vaccination centres across the West and North West. The mass vaccination centres were critical to ensure everyone in our communities had access to the free vaccine and I want to thank each and every one of you for your dedication, commitment, and drive in delivering a very effective and successful vaccination programme.

During the year we also visited with staff across all our sites as we undertook a series of recognition events. These special commemoration events recognised the dedication and exemplary work of all our staff throughout the COVID-19 pandemic. We also took the opportunity to plant an Irish oak tree at each site to commemorate all those who died during that period.

The implementation of the Enhanced Community Care (ECC) Programme continues with significant staff resources allocated to support this huge change in the delivery of HSE services in the area of cardiology, respiratory, diabetes and diagnostic services. The rollout of these enhanced community services is a very important joint development with strong integrated working between Community Health Organisations and Saolta.

We saw significant infrastructural development, which is critical to providing better patient care and improved health outcomes for our patients.

In Merlin Park University Hospital we opened two new replacement orthopaedic operating theatres at a cost of €10.57m to design, build and equip. The new theatres were required to restore full elective orthopaedic procedures and address orthopaedic waiting lists.

At University Hospital Galway, we saw the opening of a new state-of-the-art dedicated cardiothoracic ward allowing for the highest standard of care for our patients as well as the opening of the temporary Emergency Department.

We also welcomed the announcement of a new Surgical Hub for Galway on the Merlin Park site as well as the announcement of a new elective hospital for Galway.

The new National Radiation Oncology Centre situated on the grounds of University Hospital Galway, is near completion and is expected to be operational in early 2023. At an overall projected budget of €70.7m, it is the



CEO Overview

largest infrastructure development in the history of UHG and will improve the provision of radiotherapy for cancer patients, and allow the introduction of new treatments and technologies.

Mayo University Hospital received approval for a €18.4m extension to the Emergency Department and a new Acute Medical Assessment Unit. The hospital also saw an enhancement of biochemistry lab equipment leading to faster turnaround times for test results.

Letterkenny University Hospital received capital funding to progress the expansion to the Renal Dialysis Unit and funding was secured under the National Equipment Replacement Programme to replace the existing MRI scanner at the hospital.

In Portlincula University Hospital, construction work commenced on the 50 bedded replacement ward block and a 12 bedded isolation ward. Also in the hospital, a new CT scanner and ultrasound service became operational.

At Roscommon University Hospital, preparation is underway to secure staffing and level of readiness to open the new Palliative Care Support Unit which is expected to be operational in Q1 2023. The new inpatient unit will offer patients and their families access to care from a range of specialist medical, nursing and health and social care professionals.

At Sligo University Hospital the new Emergency Department extension was opened and Minister for Health, Stephen Donnelly official opened the new Diabetes Centre.

We received next phase capital approval to progress the ED women's and children block at University Hospital Galway, an outpatient department at Merlin Park University Hospital along with €10.28m to replace key equipment across the sites.

Overall, we accomplished a lot this year, and this report illustrates the numerous improvements and achievements we made. I want to thank each and every member of staff across all of our hospitals for the work and effort that you've put in throughout the year to provide the best care that we possibly can for our patients.

Tony Canavan,
CEO, Saolta University Health Care Group.



About Saolta University Health Care Group

The Saolta University Health Care Group serves a population of 758,447 (2022 census) people, and provides acute and specialist hospital services to the West and North West of Ireland - Galway, Mayo, Roscommon, Sligo, Leitrim, Donegal and adjoining counties.

The Saolta University Health Care Group comprises 7 hospitals across 8 sites:

- » University Hospital Galway
- » Merlin Park University Hospital
- » Mayo University Hospital
- » Roscommon University Hospital
- » Portiuncula University Hospital
- » Sligo University Hospital (incorporating Our Lady's Hospital Manorhamilton)
- » Letterkenny University Hospital

Our Academic Partner

Our academic partner is the University of Galway

Our relationship with University of Galway is important in improving standards of care, fostering education, clinical research and innovation

University Hospital Galway campus is home to the Lambe Institute for Translational Research and the Health Research Board (HRB) Clinical Research Facility and represents an innovative partnership between University of Galway, Health Research Board, Saolta University Health Care Group and the Health Services Executive and supported by private philanthropy through Galway University Foundation.



1. Letterkenny University Hospital, Model 3
2. Sligo University Hospital, Model 3 (incorporating Our Lady's Hospital Manorhamilton, Model 2)
3. Mayo University Hospital, Model 3
4. University Hospital Galway, Model 4
5. Merlin Park University Hospital, Model 2
6. Portiuncula University Hospital, Model 3
7. Roscommon University Hospital, Model 2

Our Affiliations:

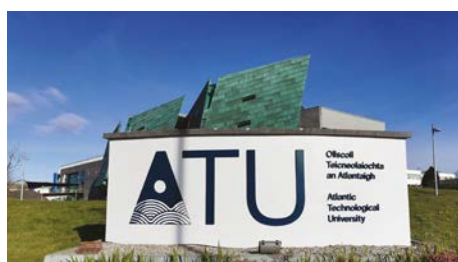
University of Galway
Atlantic Technological University

Links to:

University of Limerick
University College Dublin

Royal College of Surgeons

Technological University of the Shannon





Our Year in Figures

Population:
758,447



Staff
11,326.76
(WTE)



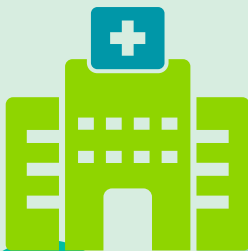
235,030

People seen in our Emergency Departments
+11% on 2021



12,731

People treated for
minor injuries at
Roscommon Injury Unit
+27% on 2021



542,800

Outpatient Appointments
Total new and return
outpatient appointments

GUH
239,052

SUH
86,964



PUH
32,911

MUH
49,346

RUH
19,397

LUH
61,040

193,794

Day Case Procedures



Saolta welcomed
8,161
babies



108,113
Inpatient Procedures



COVID-19 Saolta Staff Commemorations Events

In early October the Saolta Group management team visited all our hospitals for a special staff event to recognise the huge contribution of all our staff during the COVID-19 pandemic. The commemoration events recognised the dedication and exemplary work of all our staff throughout the COVID-19 pandemic.

As part of each visit, a selection of staff were presented with a medal and certificate as a token of appreciation for all the work they did during the pandemic. An Irish oak tree was also planted at each site to remember those who died.

Following on from the commemoration, medals and certificates were presented to all staff across the Saolta Group.



PALS Appointments across the Saolta Group

New Patient Advocacy and Liaison Coordinators (PALS) were appointed to Sligo, Portiuncula and Roscommon University Hospitals.

The Patient Advocacy and Liaison Coordinator acts as the main contact between patients, their families, their carers and the hospital to ensure the patient voice is heard, either through the patient directly or through a nominated representative.



Catherine Kelly
Sligo University Hospital



Christine Rohan
Roscommon University Hospital



Sharon Donoghue
Portiuncula University Hospital

Happy Heart Healthy Eating Awards

Congratulations to the catering teams at Mayo University Hospital and Roscommon University Hospital on achieving the Gold Happy Heart Healthy Eating Award.

The awards recognise the commitment and hard work of the hospitals to ensure that the food and menus in the staff restaurants meet the Healthy Eating Guidelines set out by the Irish Heart Foundation and the Department of Health.



Photo: Mayo University Hospital



Photo: Roscommon University Hospital



Vaccinations

Saolta COVID-19 Vaccination Programme

2022 was the second year of the nationwide COVID-19 vaccination programme which was administered by Saolta for Counties Donegal, Sligo, Leitrim, Mayo, Galway and Roscommon.

The mass vaccination centres, known as CVCs were critical to ensure everyone in our communities had access to the free vaccine.

The 5-11 years olds quickly became the key focus of the CVCs for the early part of January 2022 and there was significant pressure to ensure that the centres progressed quickly through the cohort. A KPI was set to see no child waiting any more than 1 week from registration to receipt of vaccination, with between 30 and 60% of clinic time devoted to this group

The use of scheduled appointments via Covax ended on 27 January 2022, with the exception of children aged 5-11 years old and those requiring additional dose appointments for persons who were immunocompromised. All appointments were now self-booked by people directly.

After two years of managing and overseeing the regional Covid Vaccination Programme, responsibility transferred from Saolta to HSE Community Healthcare Organisations in the West and Northwest.

At the point of handover, the Saolta governed vaccination programme had administered 750,000 vaccinations, of which 703,000 had been given in CVCs.





Public Information Videos – Saolta Vaccination Centres

HSE Vaccination Centre, Breaffy, Castlebar: www.youtube.com/watch?v=4e_gWfw8HBY

HSE Vaccination Centre, LYIT Letterkenny: <https://www.youtube.com/watch?v=r0Qrty85VRU>

HSE Vaccination Centre, Abbey Hotel, Roscommon: https://www.youtube.com/watch?v=eVZ2K7o_tIU

HSE Vaccination Centre, Carrick on Shannon: <https://www.youtube.com/watch?v=xYcT4-wO51A>

HSE Vaccination Centre, Clifden: <https://www.youtube.com/watch?v=sC9E6v5o6yc>

HSE Vaccination Centre, Carndonagh, County Donegal: <https://www.youtube.com/watch?v=R02NwsY-cAo>

HSE Vaccination Centre, Burtonport, County Donegal: <https://www.youtube.com/watch?v=tbawsPjX9JY>

HSE Vaccination Centre, Belmullet, County Mayo: <https://www.youtube.com/watch?v=KhcjY7S3-kM>

HSE Vaccination Centre, Galway Racecourse: https://www.youtube.com/watch?v=MZxiT1_Oebk

National Covid Vaccination and Testing Programme - Defence Forces: <https://www.youtube.com/watch?v=BpHP-ZnEnqc&t=5s>

Ionad Vacsaínithe FnaSS An Clochán: <https://www.youtube.com/watch?v=BXzzZDgsrWs>

Ionad Vacsaínithe FnaSS Ailt an Chorráin: <https://www.youtube.com/watch?v=4QnB1YK4CMw>

Ionad Vacsaínithe FnaSS, Béal an Mhuirthead: <https://www.youtube.com/watch?v=ep0wX2ibfhc>

Healthcare staff support UNICEF 'Get a Vaccine, Give a Vaccine Campaign'

Staff across the Saolta Group once again supported the UNICEF 'Get a Vaccine, Give a Vaccine' campaign by getting their flu vaccination. For every member

of staff who got a flu vaccine, Saolta donated twodoses of OPV vaccine to vaccinate a child against polio.



Saolta University Health Care Group

Donated 7,240 Vaccines to UNICEF

Following the 'Get a Vaccine, Give a Vaccine' staff campaign 2021/22.

Photo: Joe Canning, UNICEF Ambassador and former Senior Galway Hurler with Pamela Normoyle, Flu Vaccination Lead, Saolta Group and Paul Hooton, Chief Director of Nursing and Midwifery, Saolta Group.





International Nursing and Midwifery Recruitment Campaign

In 2022 Saolta launched an international nurse recruitment campaign to help supplement our nursing cohort.

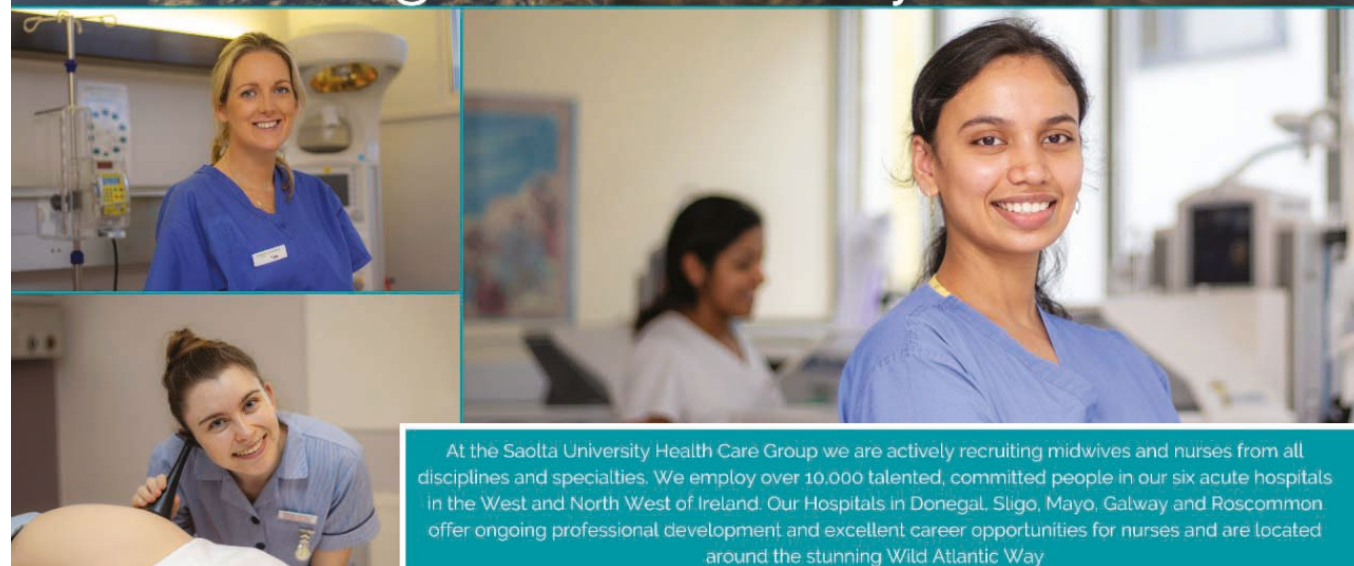
This was a strategic initiative to address vacancies in the workforce and was supported by a

comprehensive adaptation programme for international nurses who came to work in our hospitals.

In 2022, 469 international nurses were hired to fill various nursing roles across the Saolta Group.



#BELONG
Nursing and Midwifery in Ireland



At the Saolta University Health Care Group we are actively recruiting midwives and nurses from all disciplines and specialties. We employ over 10,000 talented, committed people in our six acute hospitals in the West and North West of Ireland. Our Hospitals in Donegal, Sligo, Mayo, Galway and Roscommon offer ongoing professional development and excellent career opportunities for nurses and are located around the stunning Wild Atlantic Way

Enhanced Community Care Programme

The Enhanced Community Care (ECC) Transformation Programme is of particular significance for the West and North West of Ireland due to our ageing population and geographical makeup.

In 2022, the Saolta Group worked collaboratively with Community colleagues across the region to set up and embed the ECC programme.

Services were developed within four key areas for people living in the community. These were the development of Integrated Care teams for Older Persons, Integrated Care teams for chronic disease management in Respiratory, Cardiology and Diabetes, the setting up of Community Healthcare Network Teams and further development of community diagnostics with direct GP access.

There was a significant investment in additional posts in order to roll out the services. The approved posts were a combination of acute and community-based posts and included a number to further develop community-based diagnostics.

The benefits of the ECC Programme include supporting people to maintain a healthy lifestyle with the aim of keeping people in good health and providing health care closer to people's home based on population needs assessment.

In Diabetes care it will facilitate patient access to dieticians and podiatry services in the community. For Cardiology, Rapid Access Diagnostic clinics and specialist cardiovascular clinics are among those that will be held in the community. For respiratory care Pulmonary Rehab clinics, breathlessness clinics and spirometry pathways are all being made available.

Primary Care and GP services will be delivered through multi-disciplinary and community specialist teams to people with complex needs and integration of community services, both voluntary and statutory, will improve community support to those who need it.

The health and wellbeing of the population as outlined in the Healthy Ireland Plan will be enhanced through partnership combining community supports and Health and Wellbeing initiatives. Reduction of lifestyle modifiable risk factors, the precursors of chronic illness, will be delivered through Health Promotion evidence based programmes e.g. Quit Smoking West Service.

Under the ECC Programme, discharge from acute hospitals is co-ordinated to ensure that people can return home to their own environment as soon as possible.

Under ECC, CHNs are being implemented across the country and are re-shaping how we deliver community healthcare services. These Networks support people to live more independently in their community by coordinating and integrating services.

A number of multi-disciplinary Implementation Groups, for Cardiology, Respiratory and Diabetes, cochaired by Integrated Care Consultants and operations leads are driving and supporting rollout of the clinical pathways. Several enabler Sub-groups were also developed to support access across the ECC programme, including Diagnostics, Workforce Planning, ICT, Communications, Quality & Risk and Patient and GP Liaison. The Project Management Offices in Saolta and community counterparts assisted developments.

Saolta Programme Management Office (PMO)

Saolta PMO are focused on ensuring a programmatic and structured approach to service development and change management; this approach has been shown to support sustainable and tangible change in improving services for patients and staff.

Our approach is based on evidenced based best practice from both national and international experiences that we can apply locally across the Saolta Group Hospitals and with our partners in the delivery of care to patients across the West and North West Region.

In supporting innovation and change management, we are committed to supporting Saolta staff and services to embrace change and improvement as core to service delivery, on a continuous basis, while using a project management methodology.

In 2022 our key areas of focus concentrated on the following:

- Sláintecare – mainstreaming of Saolta led projects
- Telemedicine for Cystic Fibrosis Patients (GUH/CHCDLMS/CHW)
- Urology Proof of Concept (Saolta/CHW/CHCDLMS)
- Pain Management Education Programme (SUH/CHCDLMS)
- Enhanced Community Care (Saolta/CHW/CHCDLMS)
- Integrated Care Programme for Older People (ICPOP)
- Integrated Care Programme for Chronic Disease (ICPCD) including Cardiology, Radiology and Diabetes
- Saolta Integrated Governance Project Evaluation of MCAN Model
- Evaluation of Trial of Concept for Cancer & Women & Children's MCAN and recommendations for implementation of Phase 2.
- Review of Saolta Performance and Accountability Framework with inclusion of MCANs and Clinical Directorates.
- Reporting/ Analysis
- Options Appraisal for the infrastructural requirements for GUH as the Saolta Model 4 Hospital.
- Demand and Capacity analysis for Saolta Model 4 Hospital to 2031 carried out by KPMG
- Demand and Capacity analysis for each Saolta Model 3 Hospital to 2031 carried out by KPMG

Development of Saolta PM Tools and Launch of the Saolta Programme

<https://www.saolta.ie/content/saolta-programme-management-office>



University Hospital Galway and Merlin Park University Hospital

Galway University Hospitals comprise University Hospital Galway (UHG) and Merlin Park University Hospital (MPUH). UHG is the sole model 4 tertiary referral hospital for the Saolta Group delivering emergency and theatre services, critical care, maternity, neonatal, paediatric and a wide range of tertiary referral services. The hospital is the designated supra-regional centre for Cancer and Cardiac services. UHG is one of the major academic teaching hospitals in Ireland and is attached to the University of Galway. It has strong research, education and service delivery links with the university.

2022 Highlights - University Hospital Galway (UHG)

- The National Radiation Oncology Centre build nears completion.
- Temporary Emergency Department opened.
- Capital approved to progress the new Emergency Department & Women & Children's Block.
- New 13 bed Cardiothoracic Ward opened.
- Strategic Assessment Report completed for the replacement of laboratory facilities.
- Project brief submitted for additional Ward Block/ Cancer Centre Project – The Strategic

Assessment for the development of a Cancer Centre with additional beds in GUH was submitted to the HSE Board for approval.

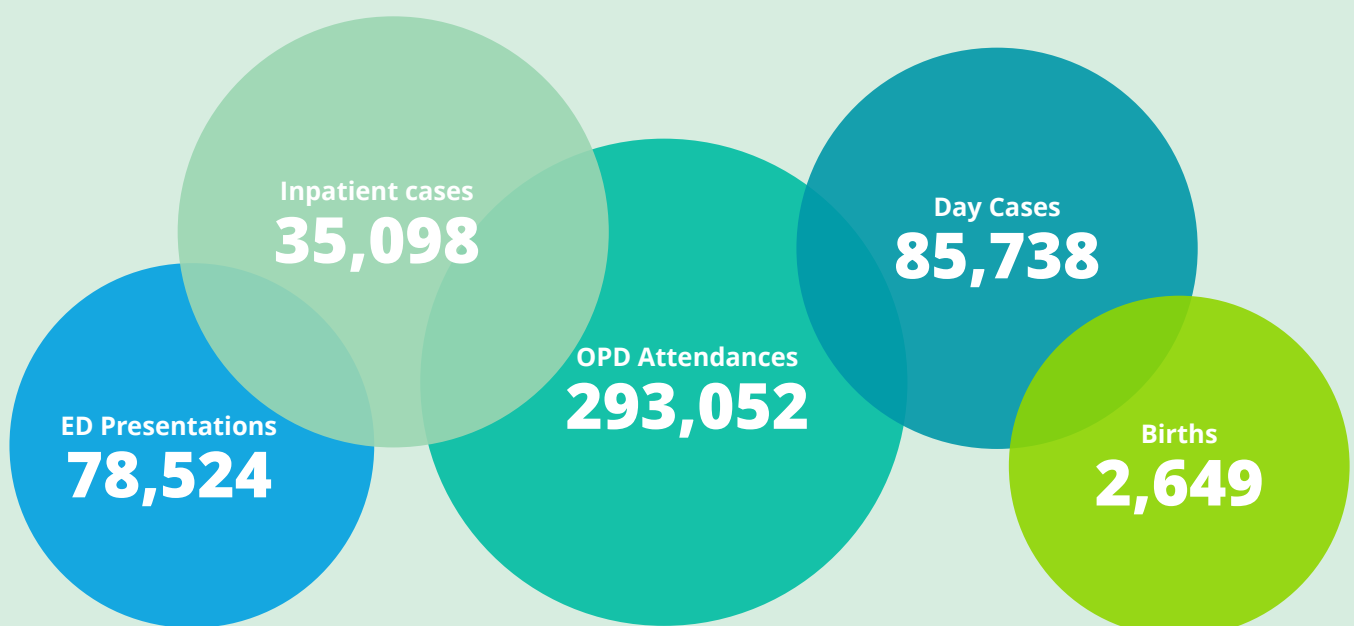
- Third Endoscopy Procedure Room - design team appointed and a steering group established.
- The Department of Reproductive Medicine commenced services in Q2 with 2 Specialty Consultants. The Department manages all fertility related referrals for the Saolta Group.
- The Complex Menopause Clinic commenced in Q4 2022.

Merlin Park University Hospital (MPUH)

Merlin Park University Hospital is a model 2 Hospital delivering non-complex elective medical, surgical and outpatient services.

2022 Highlights - Merlin Park University Hospital

- Two new replacement Orthopaedic Operating Theatres at a cost €10.57m to design, build and equip, were used for the first time in June.
- Capital approved to progress the new Outpatients Department.
- New Galway Surgical Hub announced for MPUH site.
- New Elective Hospital announced for Galway.





Meet the staff



Alice Memor
Theatre Nurse



Claire Cellarius
Breast Feeding/Lactation
Specialist Midwife



Dr Johannes Letshwiti
Consultant Neonatologist



Photo 1: Switching on of the Christmas tree lights at UHG with special guest Ollie Turner, Galway Bay FM.

Photo 2: Bikers Ride out to raise funds for the Neonatal Unit.

Photo 3: Dr Owen Gallagher and member of the Galway Senior Football team with his colleagues from the Acute Medial Unit gearing up for the All Ireland Senior Football Final.

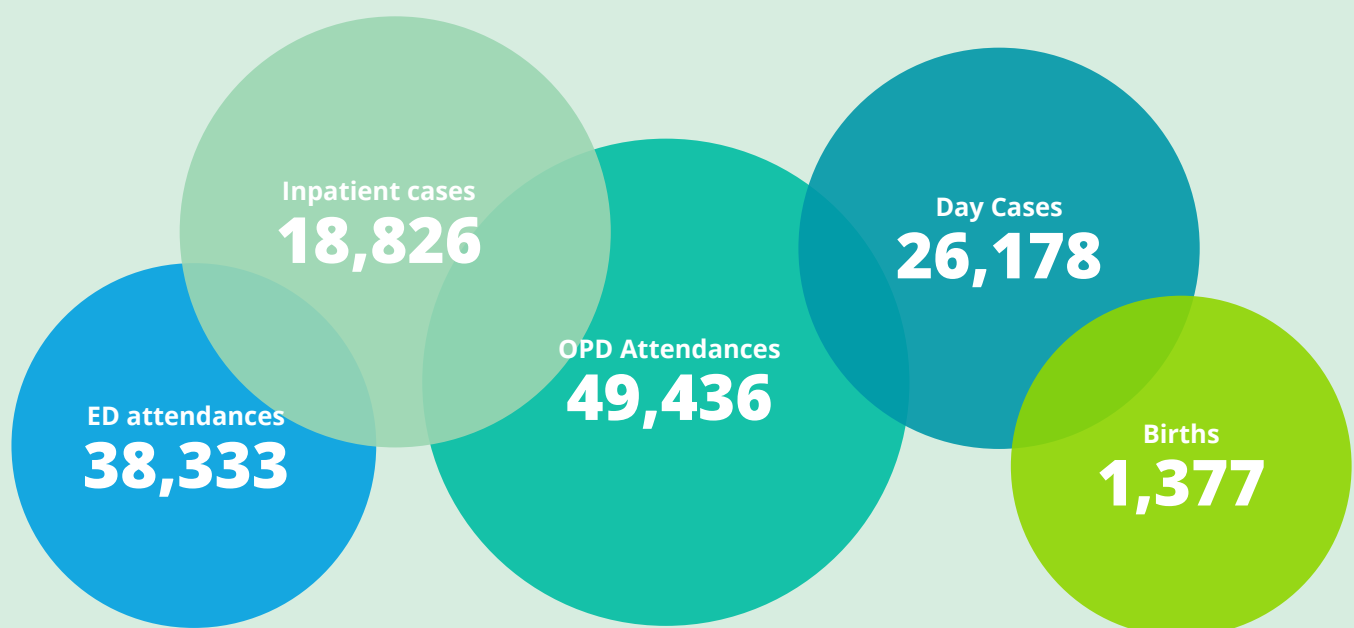
Photo 4: Maternity staff promoting National Breastfeeding week.



Mayo University Hospital is a model 3 hospital delivering 24/7 emergency medicine, general medicine including, acute medicine, respiratory, gastroenterology, endocrinology, gerontology, non-invasive cardiology, general surgery, orthopaedics, maternity, gynaecology and paediatric services. Day services include: endoscopy service, ambulatory gynaecology, medical day service Unit for infusion and transfusions, interventional radiology, renal dialysis, oncology and haematology and rheumatology.

2022 Highlights - Mayo University Hospital

- Capital approval confirmed for extension of the ED and new build of AMAU.
- New consultant appointed for diagnostic and interventional radiology which will allow the hospital to expand its range of procedures and patients will no longer have to travel to other hospitals for these interventional radiology procedures.
- Upgrade of fluoroscopy x-ray equipment and room.
- Electrical infrastructural upgrade.
- In March the endoscopy team joined the National BowelScreen Programme.
- Implementation of the Health Performance Visualisation Platform system which takes live data from the IPMS Patient Administration System and provides the data and analytics for all elements of scheduled and unscheduled care, bed management and emergency department.
- In May the AMAU reopened following two years of disruption to the service as a result of Covid.
- Launch of biochemistry lab development in July for the enhancement of biochemistry laboratory equipment at the hospital to cut turnaround times for test results.
- The biochemistry lab was awarded ISO 15189 accreditation status which recognises the quality management systems in place in the department.
- Pilot for fast track pathway for hip fracture patients in the emergency department commenced in July. This pathway involved a pre-hospital alert called 'Code Hip' to alert relevant staff that a suspected hip fracture patient is on route to the hospital.
- Upgrade of radiology and cardiac NIMIS PACS launched in July 2022.
- The wellness walkway launched in October. A designated space to promote patient's mobility, prevent loss of muscle, strength and fitness and reduce LOS promote wellbeing for patients and staff.
- The paediatric smart pump launched in May to introduce the use of the CHI paediatric smart pump system to the hospital. MUH is the first hospital outside of CHI or specialised neonatal services to use this technology for children in hospital.





Meet the staff



Dr Fionnuala Lavin
Consultant in
Cardiovascular Medicine



Prof Paul O'Grady
Consultant Orthopaedic Surgeon



Sarah Dunne
Physiotherapist

1.



2.



3.



Photo 1: Research day MUH.

Photo 2: Staff highlighting World Sepsis Day.

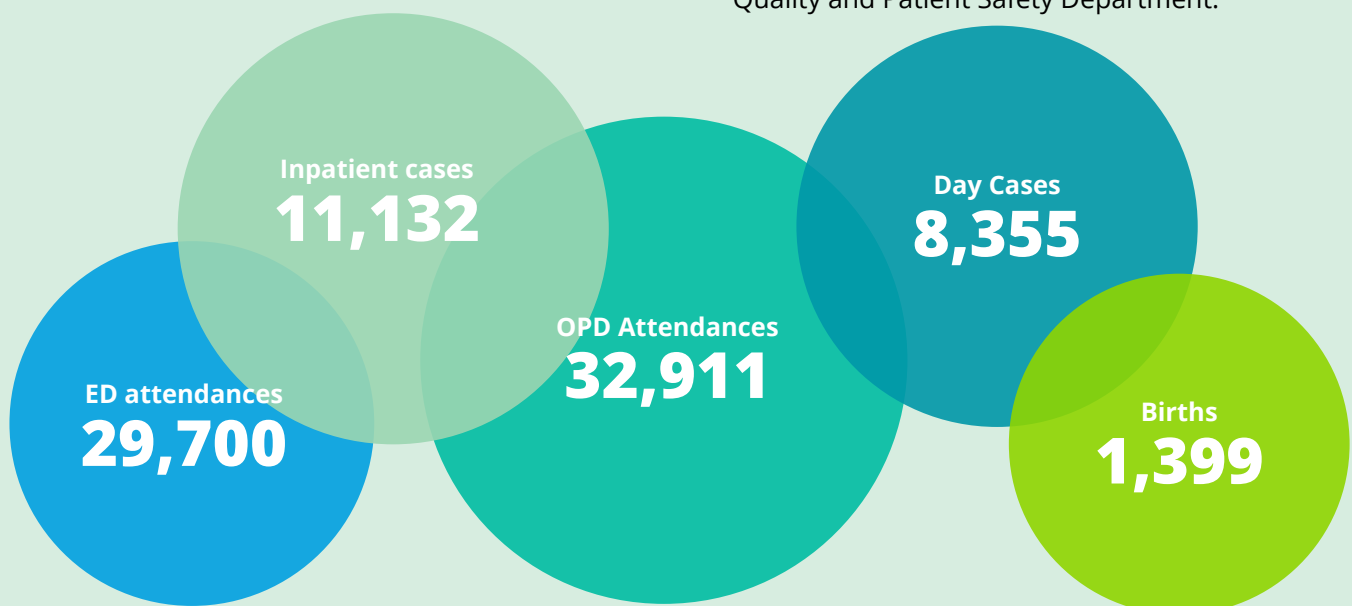
Photo 3: HSE CEO Paul Reid meets with volunteers from the hospital.



Portiuncula University Hospital is a model 3 hospital located in Ballinasloe, County Galway delivering 24/7 emergency medicine, acute surgery, medicine, critical care, day care oncology, maternity, neonatal, paediatric, laboratory and radiology to a catchment area that covers East Galway, Roscommon, the Midlands and the Mid-Western areas of Ireland.

2022 Highlights - Portiuncula University Hospital

- Construction work on the new 50 bedded replacement ward block continued.
- Building works commenced on the new 12 bedded ward in the existing OPD. The new unit will provide 8 single ensuite rooms and 2 double ensuite rooms and will meet infection control and isolation standards. It will provide accommodation for patients who are receiving end of life care, and ensure privacy and dignity for patients.
- A new CT scanner and ultrasound service became operational in Q4 2022.
- A Design plan was completed for a Day Care Ambulatory Gynaecology service.
- The OPD relocated to a new modular build and a new waiting area opened – this included the introduction of self-registration kiosks for our patients.
- The Cardiac Investigations and Paediatric Outpatients relocated to the ground floor of the Administration Block.
- Additional car parking spaces were provided onsite.
- Appointment of a Consultant General Physician/ Nephrologist to the Medical Directorate. This appointment supports the introduction of a nephrology service for Portiuncula.
- Launch and implementation of the National Incident Management System (NIMS).
- Implementation of In-Patient Management System (iPMS) in line with other hospital sites across Saolta.
- A dedicated Clinical Education Inter-professional Simulation Training Facility (CEIST) opened. This is a dedicated education facility for all clinical staff.
- Appointment of a Paediatric Dietitian and Paediatric Physiotherapist to further enhance paediatric services at the hospital.
- Commencement of the Frailty at the Front Door Multi-disciplinary Team as part of the Enhanced Community Care programme to provide a holistic assessment and intervention to patients over 75 presenting with frailty to the Emergency Department.
- Introduction of a video fluoroscopy service for inpatients.
- Appointment of Clinical Audit Co-ordinator to the Quality and Patient Safety Department.





Meet the staff



Nelson Akahomen
Healthcare Assistant
ICU/CCU



Leanne Norton
Bereavement Support Midwife



**Mahammad Muneeb
Ur Rahman**
Registrar, Medicine



Photo 1: Protected mealtimes relaunched at the hospital.

Photo 2: Staff raising awareness of medication safety with the “Know, check, ask” campaign.

Photo 3: New CT Scanner installed.

Photo 4: Maternity staff promoting National Breastfeeding week.



Roscommon University Hospital is a model 2 hospital providing medical in-patient care together with elective day case surgery, endoscopy service, urgent care centre incorporating an injury unit, medical assessment unit for GP to Consultant direct referrals and medical day services, ambulatory care, diagnostics and outpatient care.

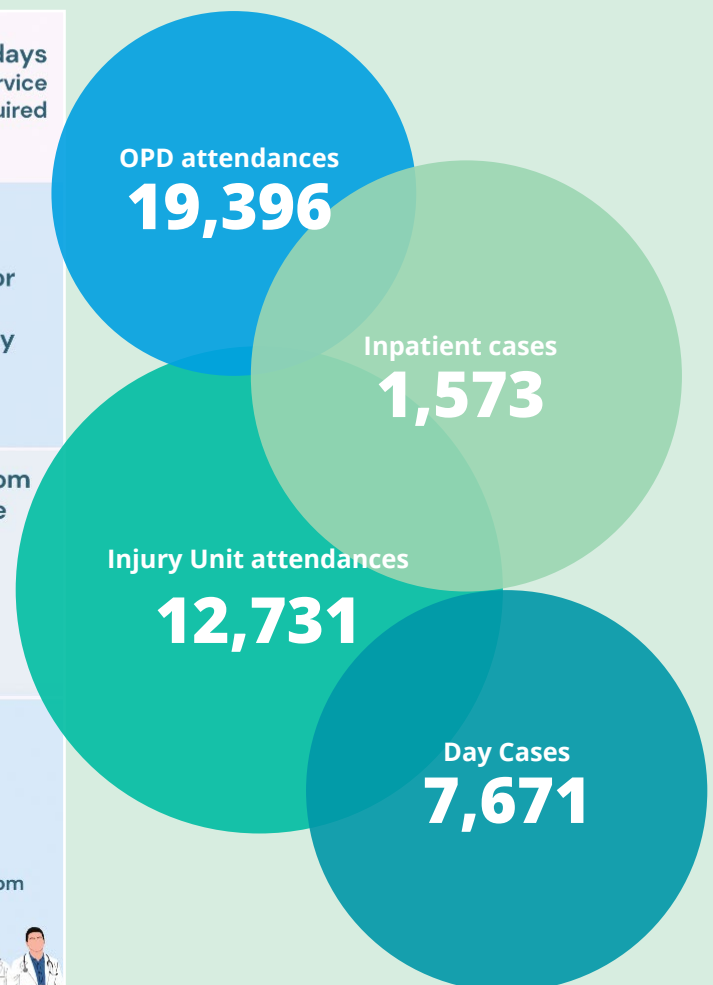
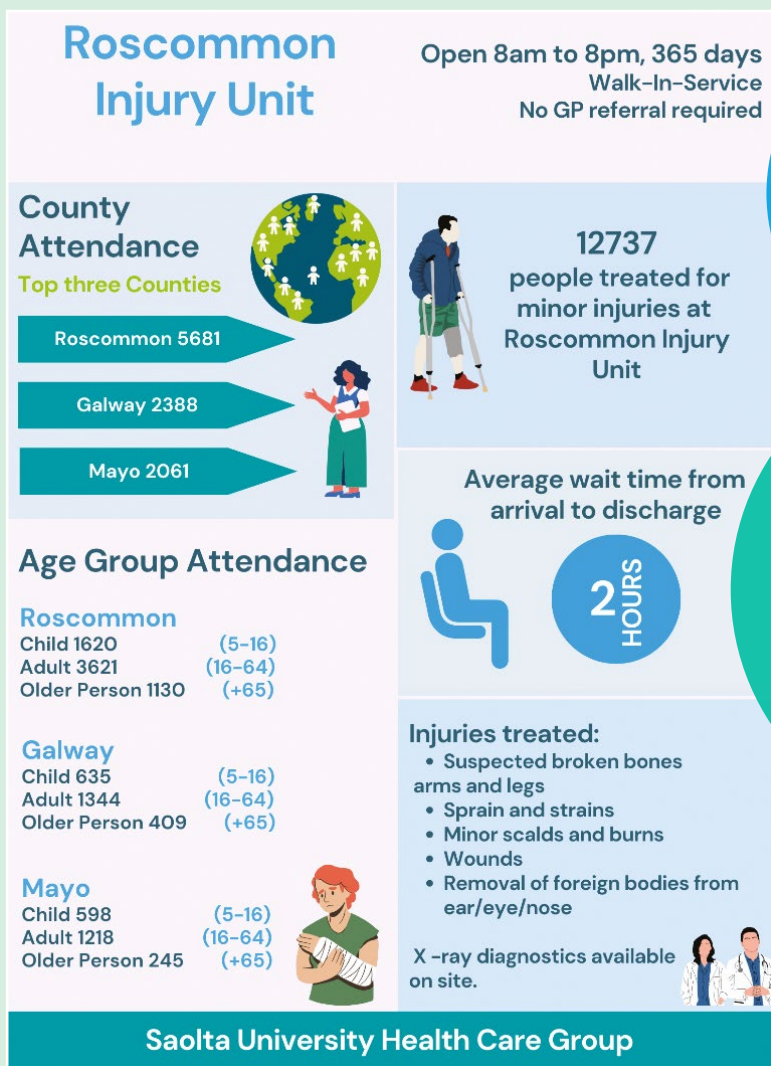
The hospital provides a full range of diagnostic services including radiology and CT service, laboratory and cardiac investigations. A frailty service which is consultant led, is delivered by a multi-disciplinary team both within the hospital and in the community.

Outpatient and day care services are offered in the following specialities: general and surgical clinics, diabetes, endocrinology, plastic reconstructive service, ENT, urology, orthopaedic, maxillofacial and vascular service. The endoscopy service, which is JAG accredited, provides services through gastroenterology and surgical services

and facilitates GP direct access and referrals through the OP service. The unit is a designated Bowelscreen facility through the National Screening Service.

2022 Highlights - Roscommon University Hospital

- Roscommon Injury Unit welcomed the appointment of two Advanced Nurse Practitioners in Emergency Medicine.
- Funding received from Bowel Screen in March for a shared Consultant Gastroenterologist post with GUH. Gastroenterologist appointed in December.
- A Clinical Nurse Manager 2 in Endoscopy Triage was appointed in September.
- Permanent Consultant General Surgeon and IT Manager appointed in October.
- Preparation underway to secure staffing and level of readiness to have Palliative Care Support Unit open and operational in Q1 2023.





Meet the staff



Sunjoy Jacob Varghese
Staff Nurse, Theatre



Kevin Mullarney
Porter



Tapas Chatterjee
Associate Specialist, Endoscopy



Photo 1: Advanced Nurse Practitioners at Roscommon Injury Unit.

Photo 2: Hospital seeks volunteers for patient council.

Photo 3: Roscommon GAA present framed jersey in appreciation to staff.



Sligo University Hospital is a model 3 hospital providing 24/7 emergency medicine, general surgery, general medicine, critical care, oncology, maternity, neonatal, paediatric, laboratory and radiology services to the population of Sligo, Leitrim, West Cavan and South Donegal. In addition, Sligo University Hospital provides regional services across the entire North West in ophthalmology, neurology, dermatology, rheumatology and orthodontics. Other regional services include paediatric insulin pump therapy service and public health laboratory.

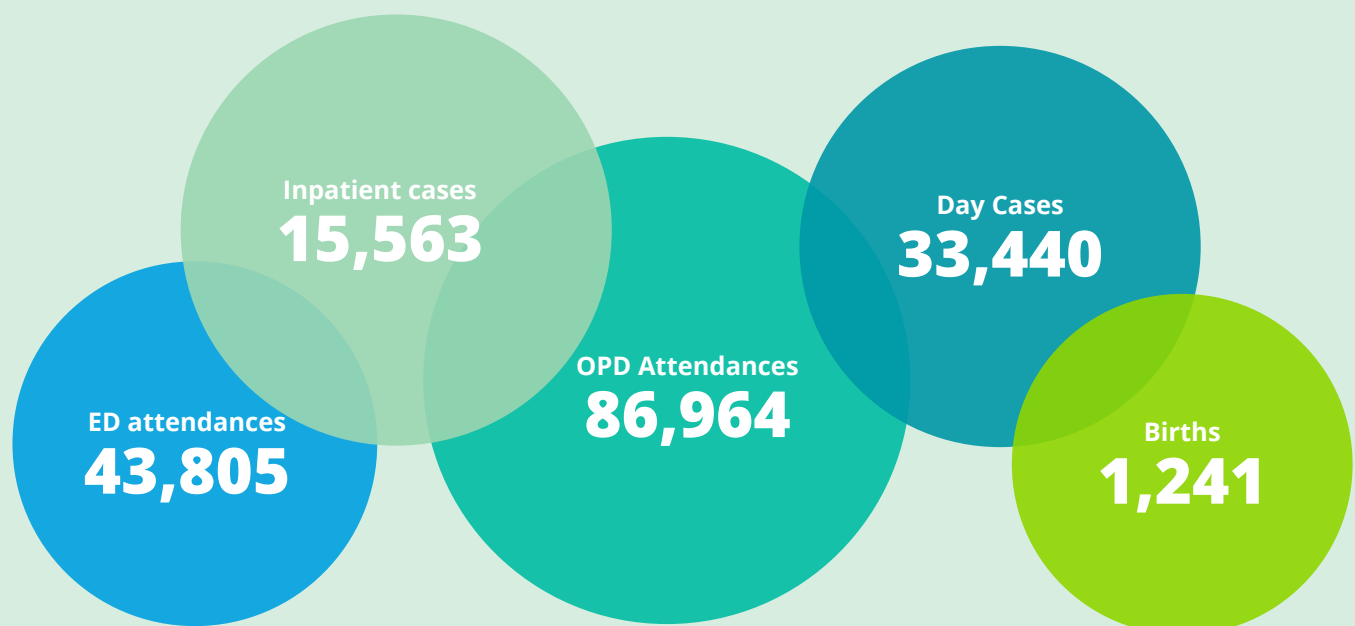
Our Lady's Hospital, Manorhamilton (OLHM)

Our Lady's Hospital, Manorhamilton is a model 2 hospital under the governance of SUH. It has 6 inpatient and 10 day beds. In addition, there are 35 short stay step down beds. OLHM provides acute regional rheumatology for the North West, day hospital, outpatient clinics, physiotherapy, occupational therapy, x-ray, ultrasound and DXA scanning.

Developments - Sligo University Hospital

- Capital approval to progress 42- bed ward block. The ward block will consist of 2 x 21 bed wards and single en suite rooms with ancillary accommodation.

- ED extension opened.
- Construction of ICU extension complete. The new extension consists of a single storey building adjacent to the existing Intensive Care Unit comprising four ensuite isolation rooms with associated facilities.
- SUH Patient Management System (IPMS) upgraded to Saolta group IPMS.
- New Diabetes Centre opened.
- Additional renal dialysis treatment bays opened.
- Midwifery Led Clinics extended to Carrick-on-Shannon, Ballymote and Ballyshannon. Midwifery-led care provides continuity of care with the aim that women see the same midwife or team of midwives for all of their appointments.





Meet the staff



Roisin Lennon
Advanced Midwife
Practitioner



Prof Nash Patil
Consultant ENT Surgeon



Dr Anne Dolan
Consultant
Anaesthesiologist



Photo 1: Protected mealtimes relaunched at the hospital.

Photo 2: Staff raising awareness of medication safety with the “Know, check, ask” campaign.

Photo 3: New CT Scanner installed.

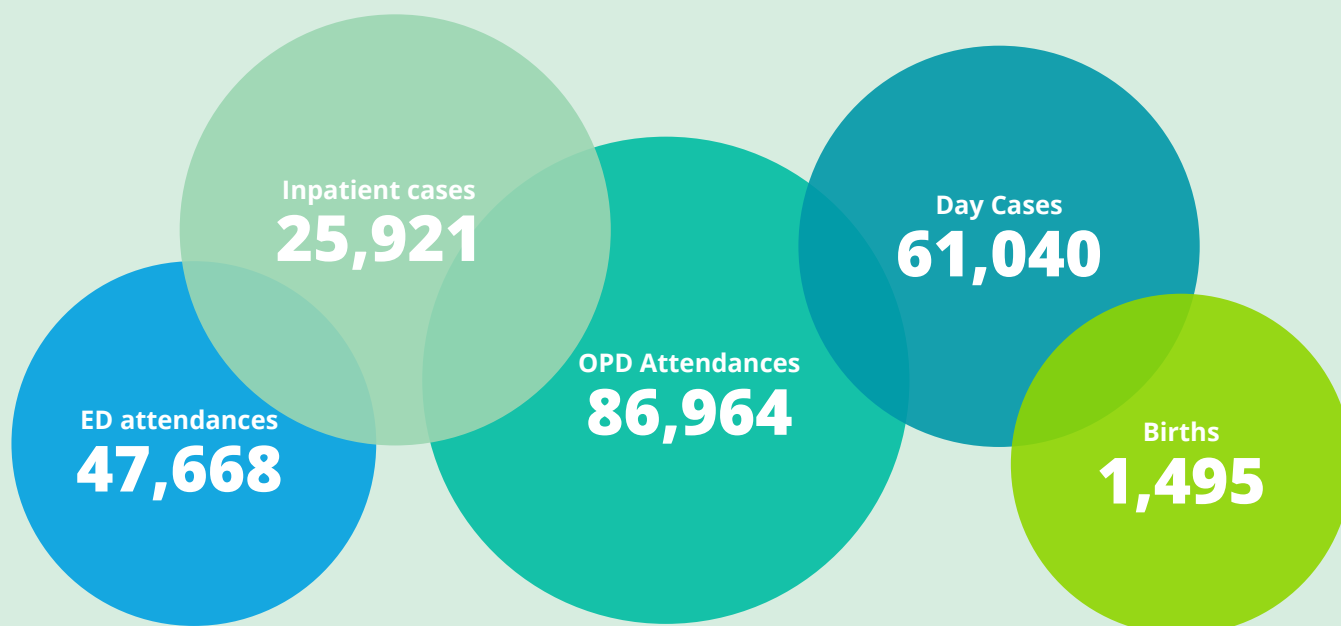
Photo 4: Maternity staff promoting National Breastfeeding week.



Letterkenny University Hospital is a model 3 hospital delivering 24/7 emergency medicine, acute and general surgery, general medicine, critical care, oncology, renal dialysis, maternity, neonatal, paediatric, consultant-led oncology and haematology, laboratory and radiology services to the North West.

Developments - Letterkenny University Hospital

- Capital approved to progress the expansion to the Renal Dialysis Unit.
- Remote monitoring was introduced on Surgical 1 Ward to facilitate early recognition of a deteriorating respiratory patient.
- Consultant Cardiothoracic Surgeon commenced in September with 3 monthly OPD clinics.
- The Radiology Department commenced diagnostic angiographies in July.
- Funding was secured under the National Equipment Replacement Programme to replace the existing MRI scanner.
- Implementation of change management programme.



Letterkenny University Hospital Activity & Operational Performance for 2022



Meet the staff



Deirdre Diver
Clinical Nurse Specialist
Endoscopy



Dr Elisma Wilken
Consultant Respiratory Physician



Natasha Mooney
Staff Midwife

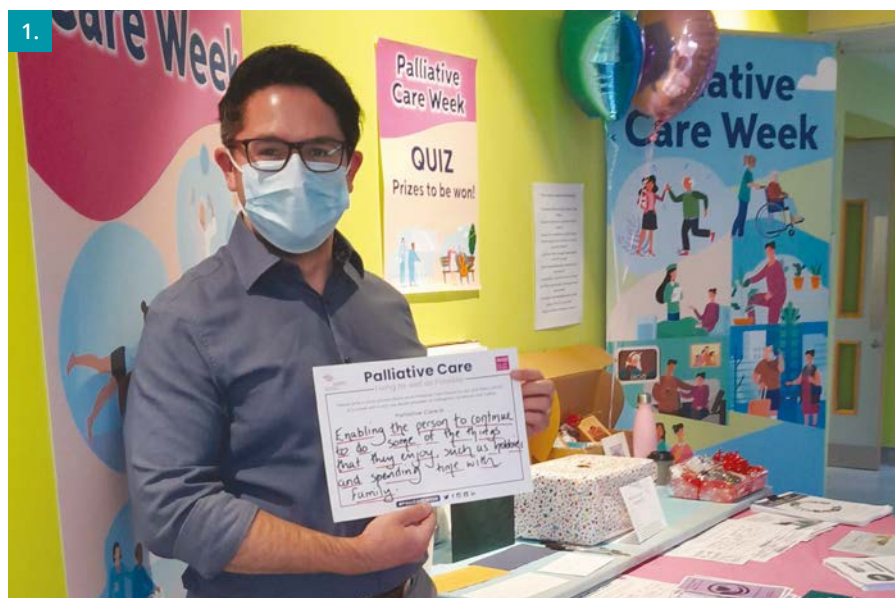


Photo 1: Staff highlighting Palliative Care Week.

Photo 2: Maternity staff promoting National Breastfeeding week.

Photo 3: Healthy Ireland lunchtime walks kick off.

Photo 4: Magnet for Europe Showcase.

New Extension to the Emergency Department at Sligo University Hospital opens

On 14 January, an extension to the Emergency Department at Sligo University Hospital came into operation.

The extension consists of a modular two storey building at the front of the hospital with a new ED reception area, a COVID-19 assessment and a waiting area which is separated into adult and child waiting rooms. In addition, a new nursing triage

area and ambulance arrival area was also opened. The second storey houses offices, staff changing areas and rest room along with a training room for ED staff.

The project was completed within 10 months at an overall cost of €3.2m and is fully compliant with the Nearly Zero Energy Building (NZEB) standard.





Photo: The NIMS team at Portiuncula University Hospital, from left, Tom Dyer, QPS Manager; Caroline Cunniffe, QPS Facilitator; Beatrice Smith, QPS Administrator and Chris McBrearty, Quality Improvement Lead.

In January, Portiuncula University Hospital launched the Implementation of direct electronic Point of Occurrence Entry (ePOE) onto the National Incident Management System (NIMS) for both clinical and non-clinical incidents.

NIMS supports the hospitals clinical and management teams to review and investigate incidents in accordance with the HSE Incidence Management Framework (2020).

The data informatics and analysis capabilities embedded within the NIMS system provides real time data on incidence occurrence/near misses and initiate prompt review and risk mitigation processes.

Registration opens for 5-11 years old to receive COVID-19 vaccine



Photos: Our vaccination centres across the West and North West begin vaccination clinics dedicated specifically for children aged 5-11 offering a Pfizer COVID-19 vaccine with a smaller dose.

Irish National Early Warning System launched at Mayo University Hospital

In February Mayo University Hospital launched INEWSV2. The Irish National Early Warning System (INEWS) now refers to an early warning 'system' rather than an early warning 'score'. This is a major change where the focus is on ensuring a whole system response is in place to anticipate, recognise, escalate, respond and evaluate the clinically deteriorating adult patient.



Photos: Staff supporting the launch of the Irish National Early Warning System at Mayo University Hospital.

Final COVID-19 Vaccination Clinic at Roscommon Vaccination Centre

The final COVID-19 Vaccination Clinic took place at Roscommon Vaccination Centre on 27 March.

The first vaccine was administered from the Roscommon Vaccination Centre – then located in the Abbey Hotel, Roscommon on 21 March 2021.

Since then the vaccination team have administered over 52,000 vaccines at clinics in vaccination centres, to residents and staff of long term care facilities, to healthcare staff, to patients in Roscommon University Hospital and to people who were housebound.



Photo: The Roscommon Vaccination Team, back row from left, Frank Harburn, Saolta Vaccine Programme General Manager; Susan McGinty, Data Quality Lead, Roscommon/Mayo Vaccination Centres; Mary Loughnane, Operational Site Manager, Roscommon Vaccination Centre and Ursula Morgan, Director of Nursing, Roscommon University Hospital. Third row from left, Aimee Brady, Administration; Ashley Byrne, Deputy Operational Site Manager; Orla Murray, Administration and Therese Flanagan, Covid Vaccinator. Second row from left, Claire McGeeney, Covid Vaccinator; Siobhan Carthy, Clinical Lead, Roscommon Vaccination Centre and David Needham, IT. Front row from left, Deirdre Harrington, Covid Vaccinator; Jackie Lillis, Administration Lead, Saolta Vaccination Programme; and Carol Keane, Covid Vaccinator.

Consultant Nephrologist encourages everyone to 'know your own kidney health' for World Kidney Day

For World Kidney Day on 10 March, Dr Paul O'Hara, Consultant General Physician and Nephrologist at Portiuncula University Hospital highlighted the importance of screening for CKD in high risk groups, including all patients with diabetes, obesity and hypertension.

Stopping smoking, eating a healthy diet low in salt, exercising daily, having regular health checks for diabetes and high blood pressure and avoiding

prolonged use of anti-inflammatory pain killers, protects your kidneys.

Portiuncula Kidney Clinic serves the needs of patients with kidney problems within the hospital catchment area, mainly East Galway and Roscommon and deals with the entire spectrum of kidney conditions with referrals from both the hospital and GPs.



Photo: At Portiuncula University Hospital, from left, Grace Gannon, Advanced Nurse Practitioner Cardiology; Dr Paul O'Hara, Consultant General Physician and Nephrologist and Hilda Clarke, Clinical Nurse Specialist Diabetes.

BowelScreen launches endoscopy service at Mayo University Hospital

In April, BowelScreen, part of the National Bowel Screening Programme launched the endoscopy service at Mayo University Hospital (MUH).

Mayo University Hospital joins Saolta hospitals, University Hospital Galway, Letterkenny University Hospital, Roscommon University Hospital, and Sligo University Hospital in providing BowelScreen

services for the people of the West of Ireland.

BowelScreen conducts around 4,700 colonoscopies per year. The service at MUH provides colonoscopy services for BowelScreen participants in the Mayo region who have been referred for further investigation having received a 'not normal' result on their home FIT kit tests.



Photo: Mayo University Hospital Team, from left, Catherine Donohoe, Hospital Manager; Dr Donal Tighe, Consultant Gastroenterologist and BowelScreen Clinical Lead; Fiona Murphy, Chief Executive, National Screening Service; Hilary Coffey Farrell, Programme Manager, BowelScreen; Mary Sheedy, Deputy Manager, BowelScreen; Kathy Stack, Clinical Nurse Specialist, BowelScreen; Prof Eoin Slattery, Consultant Gastroenterologist and Saolta Group Clinical Lead for Endoscopy and Prof Pádraic Mac Mathuna, Clinical Director of BowelScreen.

University Hospital Galway open Parents' Room in the Neonatal Unit



Photo: At the opening of the upgraded parents' room in the neonatal unit, from left, Helen Murphy, Director of Midwifery; Dr Johannes Letshwiti, Consultant Neonatologist and Irene Glynn, Clinical Nurse Manager 2, Neonatal Intensive Care Unit.

In April, the Neonatal Unit at University Hospital Galway upgraded a room within the unit to be used by parents who have to travel long distances to see their babies who are undergoing intensive care treatment.

The Neonatal Unit at University Hospital Galway is the regional neonatal unit for the West and North West of the country and cares for babies born prematurely, weighing less 1500g. The parents' room which located within the unit has en suite facilities and is decorated to be as homely as possible. The room also includes a resting area, a cot, a TV, telephone and emergency call bell as well as a fridge and kettle for parents to prepare drinks or light snacks.

Minister for Health Stephen Donnelly TD opens new Diabetes Centre in Sligo

Minister for Health, Stephen Donnelly TD was welcomed to Sligo University Hospital in May to officially open the new Diabetes Centre.

The new centre consists of five multi-purpose clinic rooms including podiatry clinic room, an education room and a number of offices.

The opening of this new centre allows for a more timely access to Consultant clinical expertise with the introduction of a 24 hour rapid assess

Consultant weekly slots. This will reduce the admission and length of stay rates in SUH. Access to both Endocrinologist, Dietician, Clinical Nurse specialist in a one stop shop will increase patient care and satisfaction rates.

The 300sq/m standalone single storey construction within Sligo University Hospital campus will meet the existing needs of the paediatric and adult diabetes service in Sligo.



Photos: Minister Stephen Donnelly TD officially opens new Diabetes Centre in Sligo

Galway University Hospitals introduce innovative day case procedure to address uncontrolled blood pressure



Photo: Prof Faisal Sharif, Consultant Cardiologist, Galway University Hospitals

In May, Galway University Hospitals became the first hospital in the country to introduce a new minimally invasive day case procedure (Renal Artery Denervation) to reduce blood pressure in patients. The patient comes into hospital in the morning, has the procedure and returns home the same day.

Renal Artery Denervation helps patients with high uncontrolled blood pressure or hypertension which is a major risk factor for stroke, heart attack,

vascular disease and chronic kidney disease.

Approximately 35% of the adult population in Ireland have hypertension and around one third of these patients are taking medication but their blood pressure is still uncontrolled. Controlled blood pressure reduces the risk of debilitating side effects. Even a small reduction in blood pressure can lead to a significant reduction of the risk of stroke or heart attack.

Merlin Park University Hospital's new replacement orthopaedic theatres operational

Two new replacement orthopaedic operating theatres on the Merlin Park site, which cost €10.57m to design, build and equip, were used for the first time on Friday 10 June.

Prior to the opening of the new theatres, there was only one orthopaedic theatre on the Merlin Park site.

This was the only facility available in Galway University Hospitals to provide elective orthopaedic

procedures. The two new replacement theatres were required to restore full elective orthopaedic procedures at Merlin Park University Hospital and address orthopaedic waiting lists.

The build consists of two operating theatres, two anaesthesia rooms, a recovery area and other ancillary accommodation to support the theatre suites. The theatre building is connected to the main hospital block by a link corridor which is the access point for patients and staff.



Photo: Merlin Park University Hospital's surgical team in one of the new orthopaedic theatres, back row from left, Agata Orlowska, Staff Nurse; Muhammed Nasih Puthenpeedikakkal, Staff Nurse; Kate Lynch, Staff Nurse and Mary Keane, Clinical Nurse Manager 2. Front row from left, Yvette Blandres Staff Nurse; Dr Mishal Khan, Anaesthetics; and Caroline Pryce, Staff Nurse.

Major enhancement to laboratory equipment leading to faster turnaround times for test results at Mayo University Hospital

A major enhancement of biochemistry laboratory equipment at Mayo University Hospital has significantly cut turnaround times for test results.

The biochemistry laboratory at the hospital has undergone enormous development with an ambitious project to install a revolutionary automated track analytical system. This is the only Beckman Coulter automated laboratory system used in Ireland and was one of ten in the world at the time of installation.

The busy laboratory in MUH analyses clinical samples to assist in the diagnosis, monitoring and prognosis of a wide range of diseases. The team of medical scientists process 1,500 samples per day, providing a vital diagnostics service to support doctors and nurses in making clinical decisions within both MUH and the many GP practices in the region.



The track analyser machine automates the processing of samples that is usually done by hand, and the main benefit to patients is a much improved turnaround time for test results.

Video: <https://www.youtube.com/watch?v=x7oZC-oYhNA>



New state-of-the-art cardiothoracic ward opens at University Hospital Galway

In July University Hospital Galway opened a new 13 bedded state-of-the-art ward dedicated to cardiothoracic surgery.

The ward is built to the highest standard and accommodates three isolation rooms, three two-bedded wards and a four-bedded ward depending on the needs of the patients.

The area includes a pre-discharge lounge/ waiting area for patients waiting for admission. There is also a treatment room / pre assessment room where patients can be pre assessed prior

to surgery.

Costing €4.71m to design, build and equip, the ward has a state-of-the-art monitoring facility with telemetry and in-room monitoring. This provides privacy to the patient when they are resting while allowing them to be monitored by staff in the ward twenty four hours a day.

It is staffed by dedicated specialist medical, nursing and allied health professionals with regular upskilling programmes to ensure that staff deliver the most up to date care.

'Portiuncula University Hospital launch 'Seo Mise' to enhance quality dementia care

In August, Portiuncula University Hospital with support from the National Dementia Office launched 'Seo Mise - This is Me'.

'Seo Mise is a quality improvement initiative developed by Portiuncula University Hospital's Occupational Therapy and Medical Social Work Departments. As part of the initiative, a Dementia Resource Pack was designed to empower patients and families to make effective decisions and choices regarding their future care and information on the availability of support services in Ballinasloe and surrounding areas available to

service users and their families.

Dementia Activity Boxes were also developed, suited to individuals requiring stimulation with therapeutic intervention. The box is equipped with a variety of both traditional and new technology products such as jigsaws, conversation balls and iPads, and are used to cognitively stimulate patients and to better build relationships among staff and their patients.

Video: <https://www.youtube.com/watch?v=BtoHLAjiYGo>



Photo: Pictured at the launch of 'Seo Mise' at Portiuncula University Hospital, from left, Ciara Mulkerns, Medical Social Worker; Rosaleen Leonard, Clinical Nurse Specialist Older Persons; Caroline McInerney Layng, Principal Medical Social Worker; James Keane, Hospital Manager; Siobhan Coen, Occupational Therapist; Bryan Dixon, Medical Social Worker; Roisin McHugh, Medical Social Worker and Mary Mahon, Director of Nursing.

New Cubbie Sensory Hub donation to Paediatric Unit, University Hospital Galway.

The Paediatric Unit at University Hospital Galway were delighted to receive a donation of a Cubbie Sensory Hub from Galway Sick Kids Foundation with the support of Galway Atlantaquaria.

The Cubbie Sensory Hub was developed by an Irish company with input from Occupational Therapists

to create a unique sensory experience to meet the needs of the child using it. The Cubbie Sensory Hub is wheelchair accessible and can be set to calming or alerting visual and sound with different colour themes and light intensity to suit the child's needs.



Photo: Pictured with the new Cubbie Sensory Hub, from left, back row, Aisling Lyons, Consultant Paediatrician Neurodisability; Colm Kennelly, Chair, Galway Sick Kids Foundation and Cecily Cassidy, Clinical Nurse Manager 2 Paediatric Unit. From left, front row, Therese Allen, Treasurer, Galway Sick Kids Foundation and Noirin Burke, Galway Atlantaquaria.





Photo: Patricia Larkin, Registered Advanced Nurse Practitioner at Roscommon Injury Unit.

Third Registered Advanced Nurse Practitioner appointed at Roscommon Injury Unit

In September, Roscommon University Hospital announced the appointment of Patricia Larkin, Registered Advanced Nurse Practitioner in Emergency Nursing to Roscommon Injury Unit.

Patricia undertook her Bachelor of Nursing Degree at University of Galway. After qualifying in 2001 she worked in Merlin Park University Hospital and in 2002 returned home to begin a 20 year career in the Midland Regional Hospital Tullamore. During this time Patricia gained vast experience in general medical and surgical nursing and worked as an Arthroplasty Nurse Specialist and Clinical Nurse Specialist in the Orthopaedic Pre-Operative Assessment Clinic.

In 2018 Patricia completed a Masters in Nursing at the Royal College of Surgeons in Ireland. She focused on enhancing her trauma orthopaedic experience and gained competencies pertaining to minor injuries while working in the Emergency Department at the Midland Regional Hospital Tullamore.

This experience reaffirmed her passion for her chosen area of care and with that she went on to complete a Postgraduate Diploma in Advanced Practice at Trinity College and was awarded Registered Advanced Nurse Practitioner status in June 2021.

Letterkenny University Hospital launches Nurse-Led Wax Clinic

In September, Letterkenny University Hospital held the first nurse-led Wax Clinic in the Outpatients Department.

Staff nurse, Bridgene Bonner introduced the new clinic following specialised training in London and at the Royal Victoria Eye and Ear Hospital in Dublin. The clinic runs under the supervision from Prof Nash Patil, Consultant ENT Surgeon from Sligo University Hospital as part of the satellite ENT

Outpatient Service for Donegal.

Prior to this, the wax clinic was carried out by doctors in an ENT Clinic.

The clinic deals with micro-suction of the ears which is a non-invasive method of treating impacted wax and otitis externa, a condition that causes inflammation of the external ear canal.



Photo: From left: Bridgene Bonner, Staff Nurse Angela Hegarty; and Professor Nash Patil, Consultant ENT Surgeon from Sligo University Hospital.

The Rose Room for bereaved families

In October, Mayo University Hospital officially opened a designated room in the Maternity Unit for bereaved families.

The Rose Room is named in memory of baby Hope Rose Caulfield who sadly died in 2017 aged

9 days old. Hope Rose's parents Sandra and Jonathan Caulfield from Kiltimagh who fundraised significantly for the renovation of the space to support the hospital in providing comfort and solace to families dealing with loss.



Photo: Jonathan, Ava (aged 12), Chloe (aged 15), Sandra and Faith (aged 2) Caulfield in the Rose Room named in memory of their daughter and sister, Hope Rose.



Relocation of Emergency Department at University Hospital Galway

In October, the Emergency Department at University Hospital Galway moved to a new location at the front of the hospital.

The temporary ED provides single closed cubicles in three zones: Zone A and Zone B and a dedicated zone for children called Zone P (Paediatrics) which

has a separate waiting room.

The temporary ED also has four resuscitation cubicles, three triage rooms, an isolation room, a main waiting room and an ambulatory waiting room providing greater privacy and dignity for patients.



New Wellness Walkway launched at Mayo University Hospital

A new Wellness Walkway at Mayo University Hospital was officially launched in November.

The walkway, which is located on the first floor of the hospital, aims to promote the health and wellbeing of patients during their recovery from illness and injury. The walkway is 130m long with exercise stations and seated areas to allow patients get away from the busy ward environment.

The walkway is a protected space, and supports patients to remain active during their hospital stay. There are exercise stations designed by physiotherapists at intervals along the walk with wall panels illustrating different lower and upper body exercises. Signage, clocks and furniture along the walkway were selected in line with 'Dementia Friendly Hospitals Universal Design Approach' principles to provide patients with symptoms of dementia and their families/carers with a designated and stimulating space outside of the ward.



Photo: Pictured at the launch of the Wellness Walkway at Mayo University Hospital, from left, Grace Mullaney, Physiotherapist; Sarah Ronayne, Occupational Therapist; Mary Conlon, Clinical Nurse Manager 2 B Ward; John Mc Cormack, Patient Experience Advisor; Caitriona Davey, Clinical Nurse Manager 3 Medical Division; Aisling Bell, Physiotherapist and Laura Walsh, Occupational Therapist.

Video: <https://youtu.be/xB1DenhxdNQ>

University Hospital Galway first in the country to introduce endoscopic radial artery harvesting in Cardiothoracic surgery



Photo: The surgical team for the first endoscopic radial harvest surgery for coronary artery bypass grafting in Ireland at University Hospital Galway, from left, Mr Alan Soo, Consultant Cardiothoracic Surgeon; Dr Sadiq Siddiqui, Cardiothoracic Surgery Registrar and Mr Ronan Kelly, Consultant Cardiothoracic Surgeon. Missing from the photo Mr Fabio Bartolozzi, Consultant Cardiothoracic Surgeon.

In November, University Hospital Galway was the first hospital in the country to introduce a new minimally invasive surgery for coronary artery bypass grafting.

The endoscopic radial harvest programme reduces significantly the risk of complications and infection for the patient. The procedure was carried out for the first time in Ireland by Dr Sadiq Siddiqui as part of the minimal access surgery programme in the Department of Cardiothoracic Surgery, University Hospital Galway. Dr Siddiqui is an integral member of the surgical team led by Consultant Cardiothoracic Surgeons; Mr Fabio Bartolozzi, Mr Ronan Kelly and Mr Alan Soo.

Traditionally in coronary artery bypass grafting (CABG) operations, a number of arteries and veins are removed from their natural position and used as conduits to bring blood to the narrow or blocked coronary arteries on the surface of a patient's heart leaving large scars on the forearms and legs. This new endoscopic approach leaves two tiny scars, is less painful and heals quicker.



Photo: In the new Videofluoroscopy suite at Portiuncula University Hospital, from left, Anne- Marie Johnston, Senior Speech and Language Therapist; Connie Egan, Radiographer; Caroline Hanrahan, Radiography Services Manager and Keith Alani, Radiographer.

New Videofluoroscopy Service for Portiuncula University Hospital

In December, Portiuncula University Hospital introduced a new Videofluoroscopy Service for patients in the hospital who need an x-ray assessment of their swallow.

The videofluoroscopy service is led out by the Speech and Language Therapy Department in partnership with the Radiology Department.

Videofluoroscopy is an x-ray examination of the swallow and is considered the 'gold standard' for the assessment of swallowing difficulties

and can be used for assessment, diagnosis and management of dysphagia.

Dysphagia is the medical term used to describe swallowing difficulties which may be a symptom of a range of medical conditions such as; stroke, progressive neurological conditions for example Dementia and Parkinson's disease, respiratory conditions, head and neck cancer, physical and intellectual disabilities, palliative care needs or the normal ageing process.



Photo: The New Mums Virtual Wellbeing Hub introduced at University Hospital Galway is a collaborative initiative between the Maternity Department, UHG and Community Healthcare West. From left, Ailish Killilea, Assistant Director of Public Health Nursing, Community Healthcare West; Helen Murphy, Director of Midwifery, University Hospital Galway; Carmel Connolly Project Lead and Clinical Midwife Manager 2, University Hospital Galway; June Barrett Dietitian, University Hospital Galway; Peter Kidd, Pharmacist, University Hospital Galway; Anne Marie Grealish Assistant Director of Midwifery, University Hospital Galway; Eithne Gilligan, Clinical Nurse Manager 2, Community Midwives, University Hospital Galway; Marie Conway, Masters Student, Social Work Department, University Hospital Galway and Mary Moran, Midwife, Parent Education Services, University Hospital Galway.

New Mums Virtual Wellbeing Hub

The Maternity Department at University Hospital Galway introduced a 'New Mums Virtual Wellbeing Hub' to provide online support, advice and signposting on postnatal services available to mothers and their families both in the hospital and the community.

The hub is a collaborative initiative between the Maternity Department, UHG and Community Healthcare West. The team includes a Midwife, Social Worker, Paediatrician, GP, Pharmacist, Public Health Nurse, Dietician, Physiotherapist, Lactation

Consultant, Urogynaecology Specialist Midwife and a member of the Perinatal Mental Health Team.

19 couples attended the first hub which led to referrals to Physiotherapy, Lactation Consultant and Urogynaecology Specialists. Mothers connected with these services as a direct result of attending the wellbeing hub.

Video: <https://www.youtube.com/watch?v=prw28Z3W3MU>

Fourth Registered Advanced Nurse Practitioner appointed at Roscommon Injury Unit



Photo: Dona Cromar, Registered Advanced Nurse Practitioner at Roscommon Injury Unit.

In December, Roscommon University Hospital announced the appointment of Dona Cromar, Registered Advanced Nurse Practitioner in Emergency Nursing to Roscommon Injury Unit.

Dona undertook her Bachelor of Nursing Degree at Trinity College Dublin and started working in the Emergency Department at the Midland Regional Hospital Tullamore where she discovered her love for emergency nursing. She then went onto work in the Emergency Department at University Hospital Galway (UHG) enhancing her vast experience and knowledge in emergency nursing.

She achieved a Postgraduate Diploma in Emergency Nursing at University of Galway and went on to take up a permanent post as Clinical Nurse Manager in the Emergency Department

at the Midland Regional Hospital Tullamore. In 2019 she completed a Certificate in Prescribing of Medicinal Products at the University of Galway which gave her the authority to prescribe medicines to patients. In 2020 she completed a Certificate in Referring Patients for Ionising Radiation at University College Dublin which allowed her to refer patients for diagnostic imaging such as x-rays.

In August 2021 Dona took up her role as candidate Advanced Nurse Practitioner in Roscommon Injury Unit. After graduating with a Master's Degree in Advanced Nursing Practice, she was appointed as Registered Advanced Nurse Practitioner to the Injury Unit in December 2022.



A Year in Review

2022